



WAUKEE

COMMUNITY SCHOOL DISTRICT

RTL Plan

Consideration

November 9, 2020

District Priorities

1. To keep students and staff safe and healthy.
2. To keep students and staff who have chosen the in-person option to stay in school.



Things to Consider



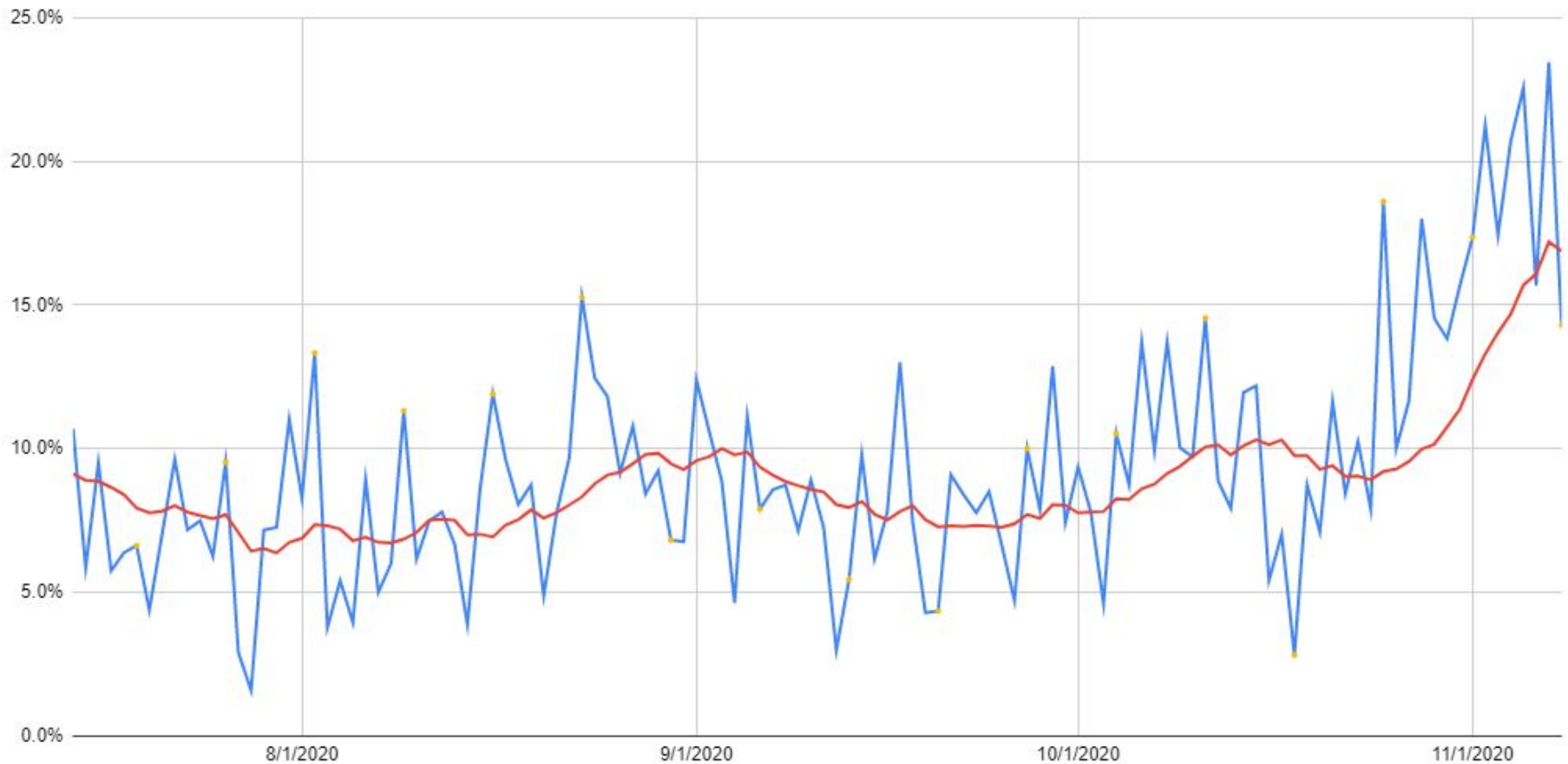
1. Positivity Rate in Dallas County rolling 14-day
2. Student Attendance Rates
3. Staff Attendance Rates
4. Zip Code Data/Cases per 100,000

Dallas County Positivity Rate



Dallas County Positivity Rates

■ Daily positivity rate ■ State 14-day average (average of averages) ■ Sundays



Current Dashboard



96	Student(s) currently testing positive (total students *9,217 in-person)
22	Staff members currently testing positive (total staff 1,800)
500	Staff and/or students currently isolating/quarantining by Dallas County Public Health
602	Number of individuals being monitored by school nurses in buildings.
Brookview Elementary Eason Elementary Grant Ragan Maple Grove Prairieview School Radiant Elementary Shuler Elementary South Middle School Timberline School Waukee Elementary Walnut Hills Elementary Waukee High School Waukee Middle School Woodland Hills Elementary	Current buildings or programs with known positive cases. <i>*All individuals impacted have been contacted.</i>

Student Positive Cases

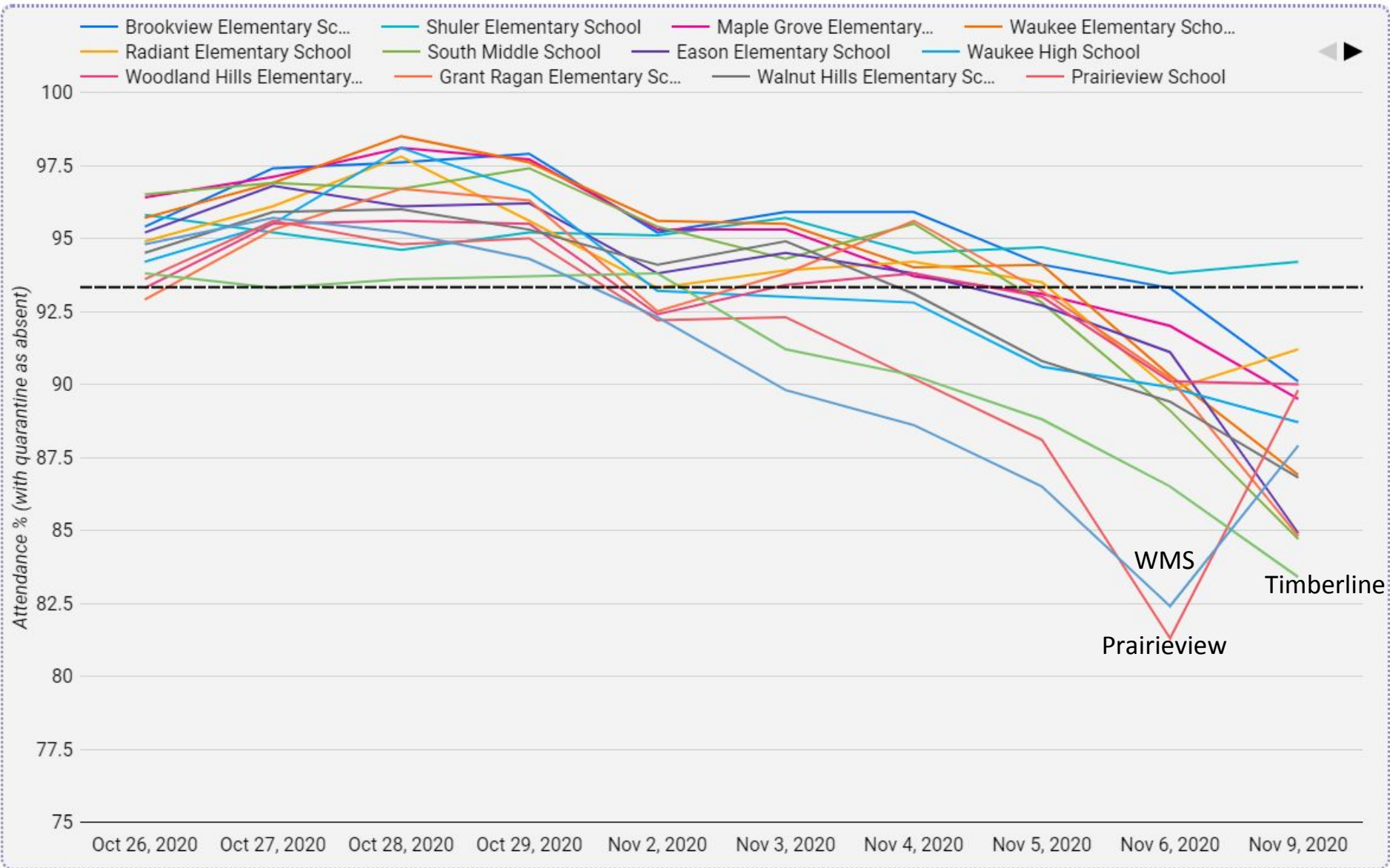


Total number of positive cases as of today: 96

Numbers today per building:

Brookview, Eason, Maple Grove, Radiant, Shuler, South Middle, Woodland Hills, Waukee Elementary	Cases present in buildings and programs (between 1-5)
Grant Ragan, Walnut Hills	6
Timberline School	9
Waukee High School	13
Waukee Middle School	20
Prairieview School	21

Student Attendance Data



* students in quarantine are treated as absent for this dataset



Student Attendance Data

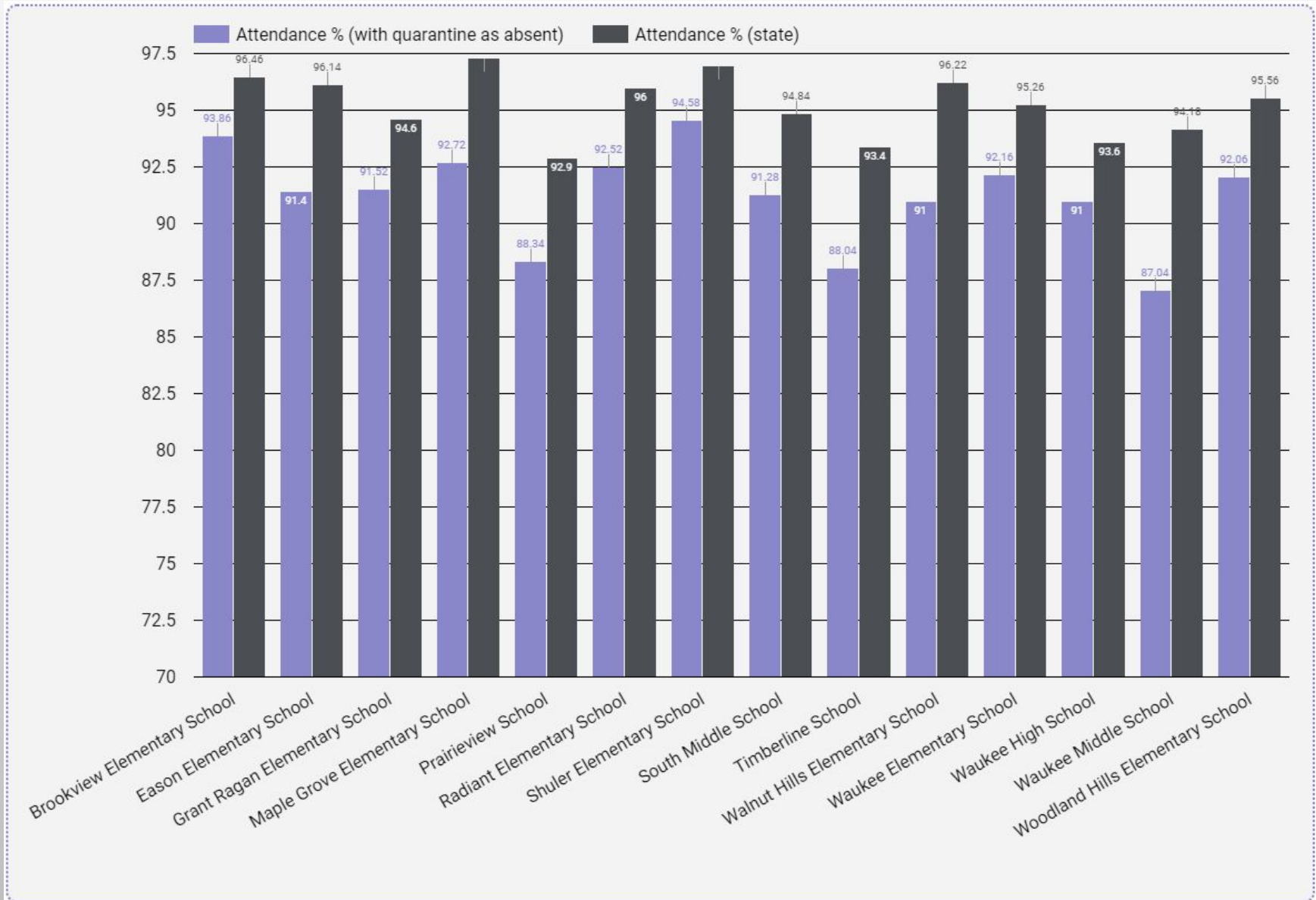
school	CALENDARDATE / Attendance % (with quarantine as absent)								
	Oct 27, 2020	Oct 28, 2020	Oct 29, 2020	Nov 2, 2020	Nov 3, 2020	Nov 4, 2020	Nov 5, 2020	Nov 6, 2020	Nov 9, 2020
Brookview Elementary School	97.4	97.6	97.9	95.2	95.9	95.9	94.1	93.3	90.1
Eason Elementary School	96.8	96.1	96.2	93.8	94.5	93.8	92.7	91.1	84.9
Grant Ragan Elementary School	95.3	96.7	96.3	92.5	93.8	95.6	93.2	90.2	84.8
Maple Grove Elementary School	97.1	98.1	97.7	95.3	95.3	93.7	93.1	92.0	89.5
Prairieview School	95.6	94.8	95.0	92.2	92.3	90.2	88.1	81.3	89.8
Radiant Elementary School	96.1	97.8	95.6	93.3	93.9	94.2	93.5	89.8	91.2
Shuler Elementary School	95.2	94.6	95.2	95.1	95.7	94.5	94.7	93.8	94.2
South Middle School	96.9	96.7	97.4	95.4	94.3	95.5	92.8	89.1	84.7
Timberline School	93.3	93.6	93.7	93.8	91.2	90.3	88.8	86.5	83.4
Walnut Hills Elementary School	95.9	96.0	95.3	94.1	94.9	93.1	90.8	89.4	86.8
Waukee Elementary School	96.9	98.5	97.6	95.6	95.5	94.0	94.1	90.3	86.9
Waukee High School	95.5	98.1	96.6	93.2	93.0	92.8	90.6	89.9	88.7
Waukee Middle School	95.7	95.2	94.3	92.3	89.8	88.6	86.5	82.4	87.9
Woodland Hills Elementary School	95.5	95.6	95.5	92.4	93.4	93.8	93.0	90.1	90.0

* students in quarantine are treated as absent for this dataset

Student Absentee Data - 7-day average



Effect of including quarantined students as “absent”





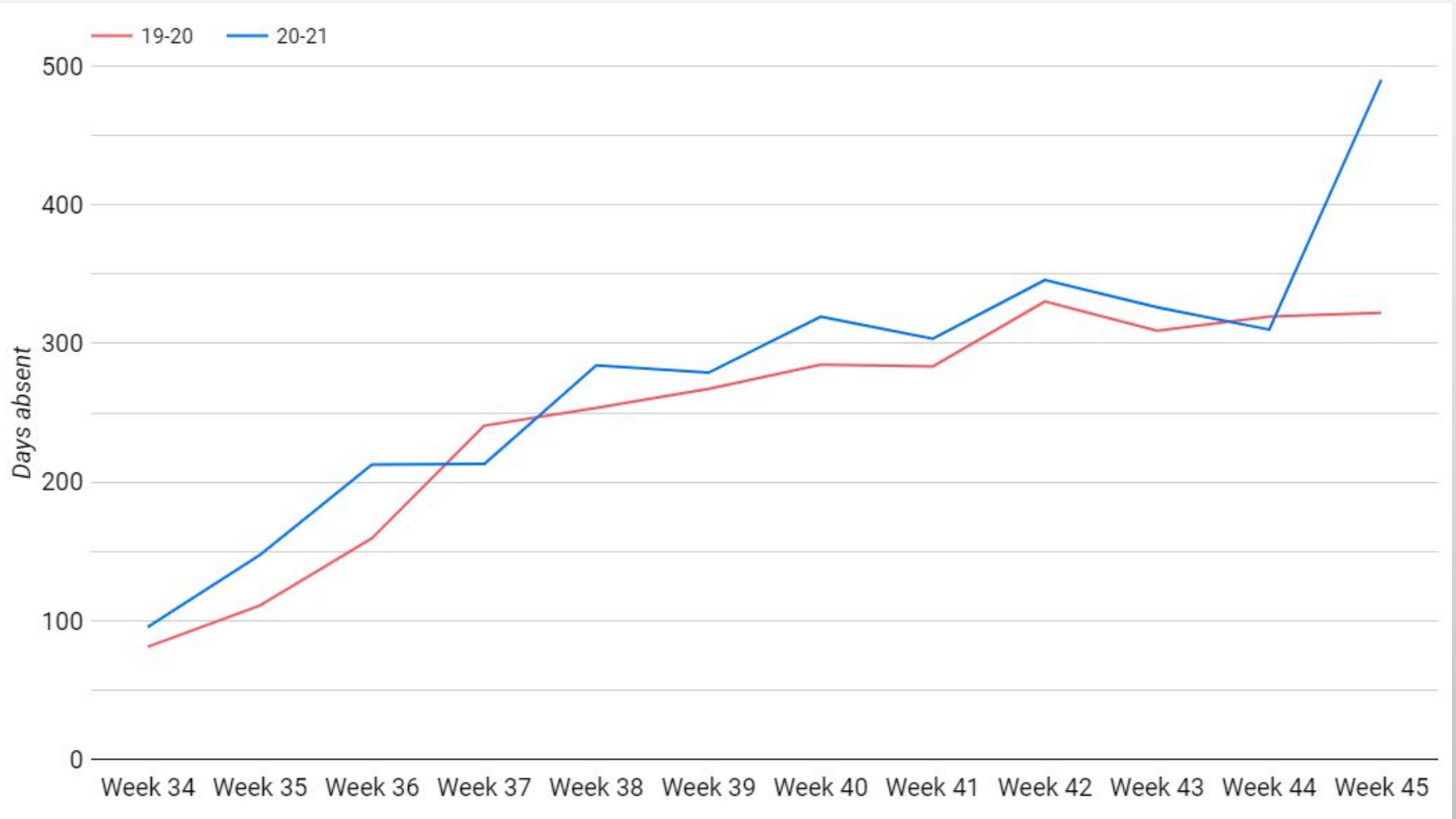
Staff Positive Cases

Total number of positive cases as of today: 22

Numbers today per building:

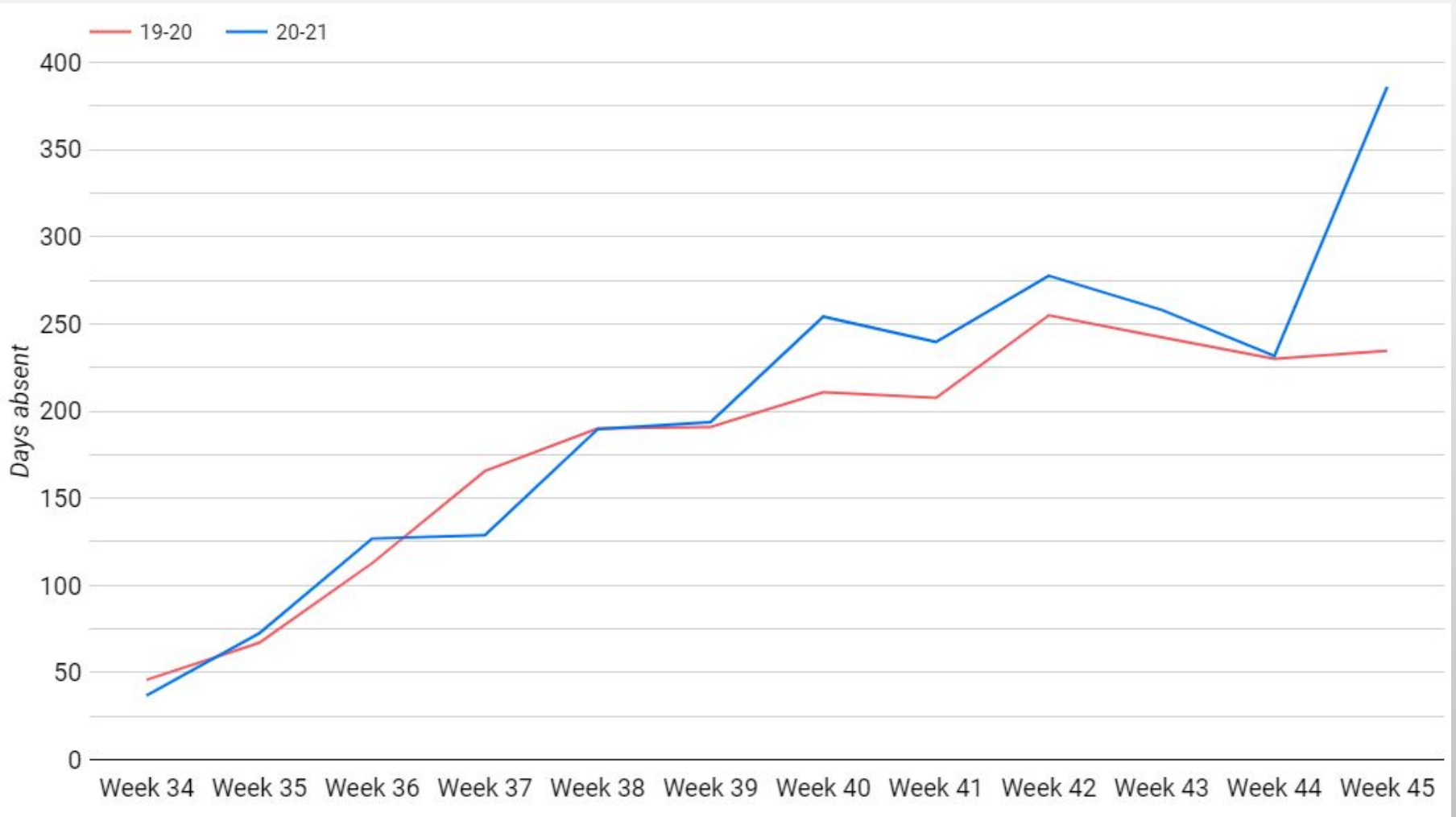
Eason, Grant Ragan, Maple Grove, Shuler, Waukee Elementary	0
Brookview, Radiant, Walnut Hills, Woodland Hills, Prairieview, South Middle, Timberline, Waukee Middle, Waukee High School, District Office/Operational Buildings, Child Care	Cases present in buildings and programs (between 1-5)

Total weekly staff (all staff) absences due to illness (personal and family)



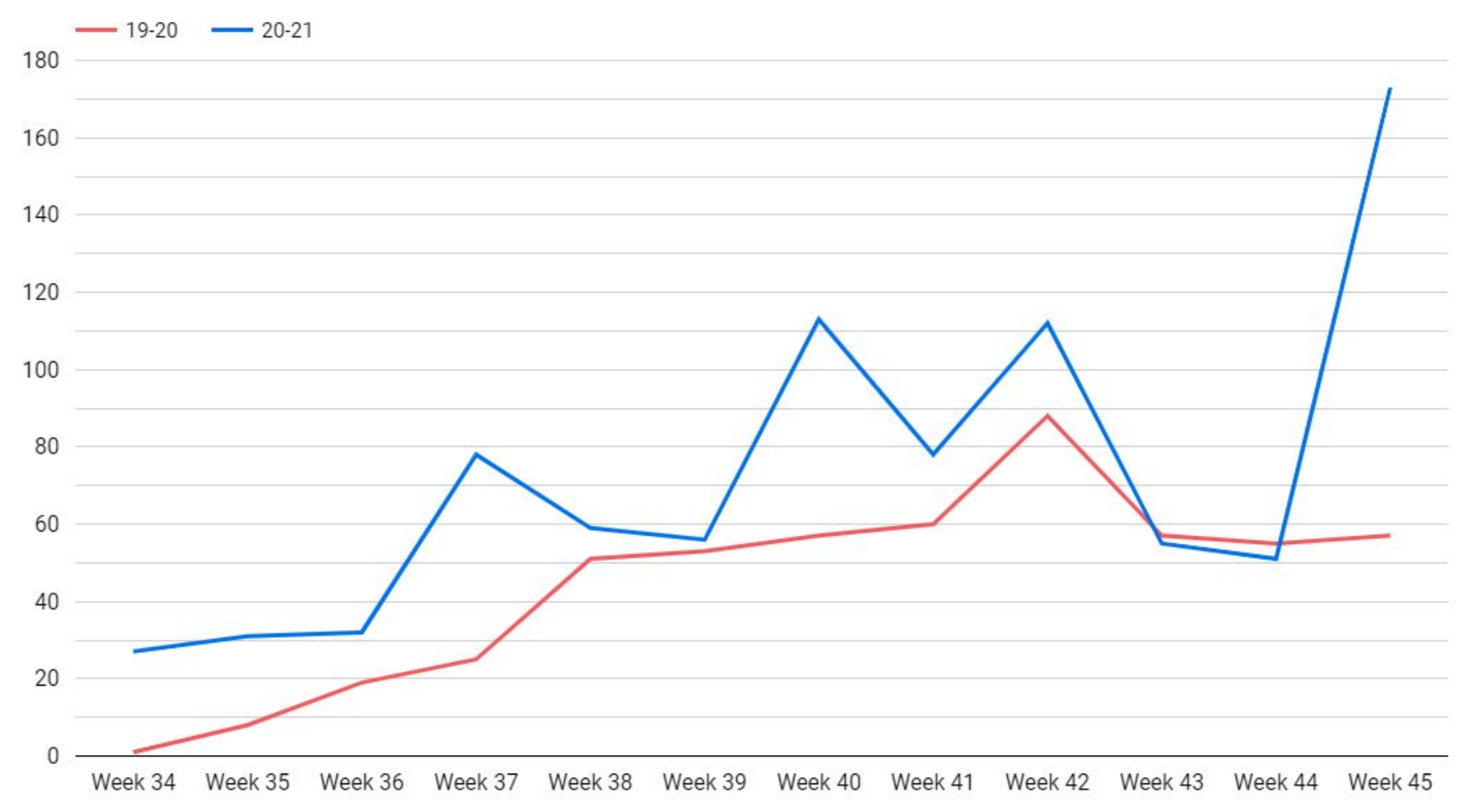
*Note - Week numbers count from January 1. Week 45 was last week, November 2-6

Total weekly teacher and associate absences due to illness (personal and family)



*Note - Week numbers count from January 1. Week 45 was last week, November 2-6

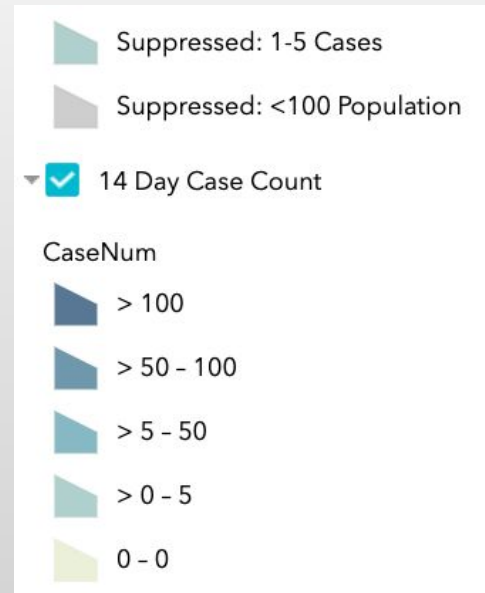
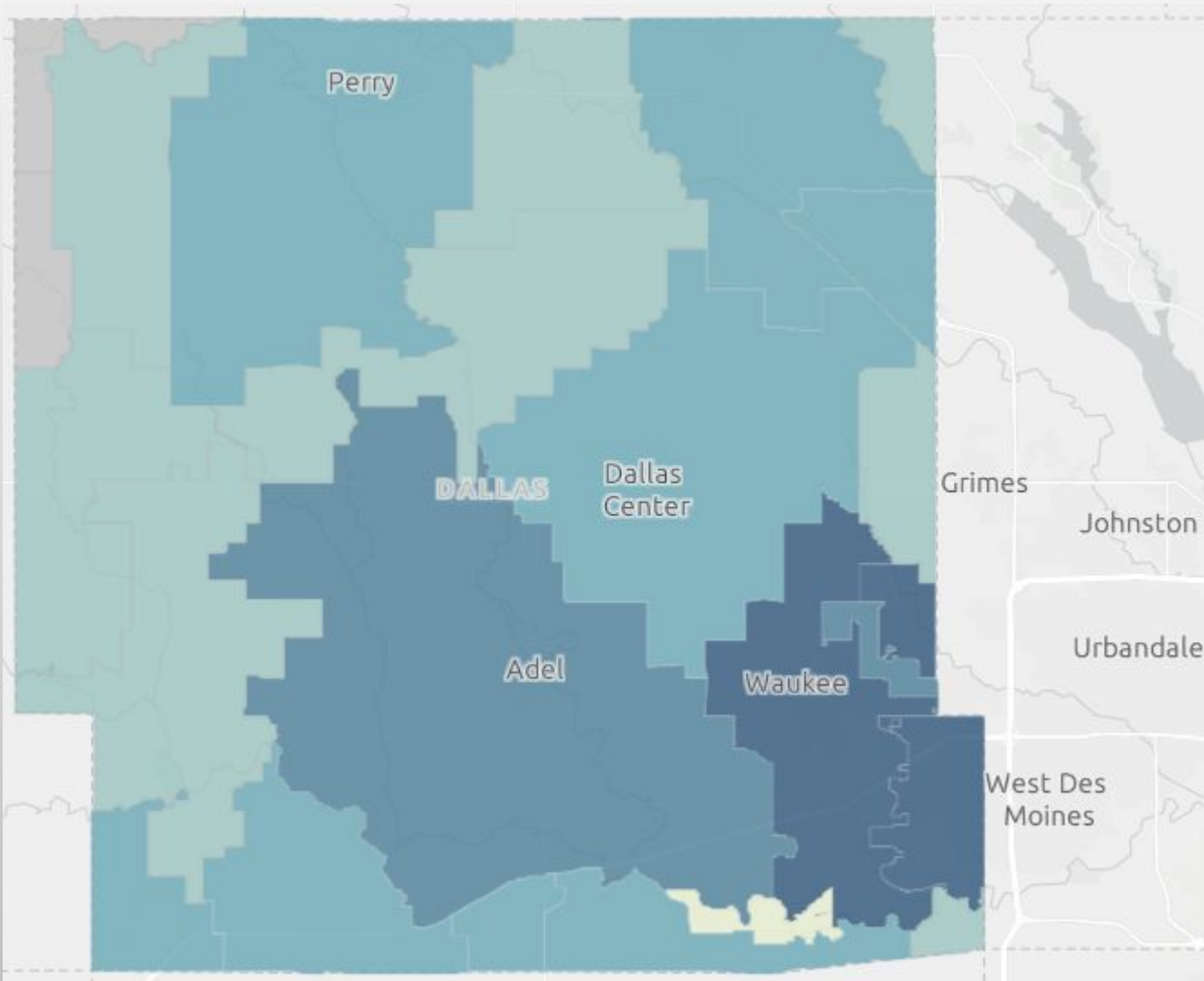
Total weekly unfilled substitute vacancies (teachers and associates)



*Note - Week numbers count from January 1. Week 45 was last week, November 2-6



Zip Code Data



Dallas County - WCSD	
Clive	81 (49)
Urbandale	115 (48)
Waukee	289 (114)
West Des Moines	187 (90)



Recommendation

The administration recommends approval to submit the fully online waiver for Prairieview School, Timberline School, and Waukee Middle School.

For clarity, that means each school will be fully online this week, and if approved, will be fully online through November 27th, with a proposed return of November 30th.