



WAUKEE

COMMUNITY SCHOOL DISTRICT

Special Board  
Meeting  
December 10



# District Matrix Revision Discussion

## Three Main Revisions:

1. Staff attendance data clarification - pg. 3
2. Consideration 3 consecutive days below ADA - pg. 3
3. Classroom / grade level at 30% absentee - pg. 3

\*Vote for consideration of approval will occur on Monday, December 14.



**WAUKEE**

COMMUNITY SCHOOL DISTRICT

# District Return to Learn Discussion

# District Priorities

1. To keep students and staff safe and healthy.
2. To keep students and staff who have chosen the in-person option in school buildings.





# Comments in the Last Few Days

“As a teacher in the district, I have some concerns about returning to school on December 14th... I know that the voices in the community have been strong and loud, but I also want the voices of the teachers to continue to be heard and supported during these unprecedented times.” - Elementary Teacher

“As a parent of online learners in (secondary grades) in Waukee schools, I wanted to share my encouragement for the board to consider delaying the return to school for in-person learning until after the holiday break... As a community we have seen improvement of our community spread and positivity numbers but the reality is we are only part of the way to a truly sustainable safe number.” - Online Family Parent

“Do you understand what a burden virtual school is on families, students AND THE TEACHERS? The students do not want this, the families do not want this and I guarantee you the teachers HATE this! Yes, we all want to be "safe" but the families that have high risk family members or are worried about safety chose to do 100% virtual and the teachers that felt unsafe chose not to teach or do 100% online teaching. But our kids, and the families that chose IN PERSON are not getting a choice right now and it's weighing on them mentally!”- In-person parent

“At what point does what we're asking from teachers become so inequitable, the profession, one we entered because we are passionate about our work with children, becomes unsustainable? Asking teachers to undergo another transition, to transition students back to in person instruction before winter break, is not an equitable request for teachers.” - Secondary Teacher

# Additional Comments in the Last Few Days



“My kiddos are normally in-person and I highly support that, BUT I do feel like we should stay virtual through the holidays. It is a huge struggle for us to make it work as two working parents, but the alternative is the back and forth disruption for my kids right prior to the holiday break.” - Parent of in-person students

“While the instruction and set-up of virtual learning is impressive and has gone much more smoothly than in the spring, I still feel my children learn best in an in-person setting. It is why I have selected the in-person setting for them. Personally, I feel that the benefits outweigh the risks for them and my family.” - Parent of In-person students

“I am writing this email as a teacher and parent of children in the district to support a return to "in person" learning for those that have chosen it. Specific concerns - Students are not getting the same level of engagement and help. There is a decrease in social connectivity between their peers- which is not good for a lot of these kids mental health. I have double the amount of students not turning in work. More students are now getting worse grades.” - Secondary Teacher

“Not that I believe our school district should hold this responsibility in logic, but I've found this year has included accepting the responsibility for those who choose not to or wouldn't see the responsibility on their own: would remaining online be an olive branch for the community to attempt and lessen additional potential exposure points just before the holidays? Remove one more exposure potential limits risk for family/friend gatherings.” - Online Parent



# And Still More Comments

“Another reason I prefer a return to in-person learning is to allow the hundreds of student-athletes impacted by this the opportunity to participate in extracurricular activities. As a coach who is directly impacted by this, I know my perspective may be seen as skewed, but I have watched many of our athletes work since they were in elementary school when they attended team camps for this once in a lifetime opportunity., I think every teacher would agree that what is best for our students is to be in person. We all take great pride in our work and I know if we are provided the opportunity to teach in person, we would rise to the challenge and provide excellent experiences for the students in our district.” - Secondary Teacher

“I am writing you because I am seriously concerned about their [her children] well-being and education if we continue online schooling... I see my kids who are normally great students having serious problems focusing. I listened to my son’s 3rd grade teacher ask the kids what makes them happy. Many said nothing and several said being able to go back to school and a cure for COVID!!” - Parent of in-person students

“In summary I’m asking you to please keep the students and teachers online for one more week to keep from changing routines for the kids again so quickly and to take a more cautious approach to see truly what’s going to happen to the spread of the virus after all the holidays have passed. I’m not asking for a lot just one more week online so as to not do too much change to our kids routines and to just see what is going to truly happen with the virus numbers.” - Parent and Family Member and Relative of a Teacher in WCSD

# Things to Consider



1. Positivity Rate in Dallas County rolling 14-day
2. Student Attendance Rates
3. Staff Attendance Rates
4. Zip Code Data/Cases per 100,000





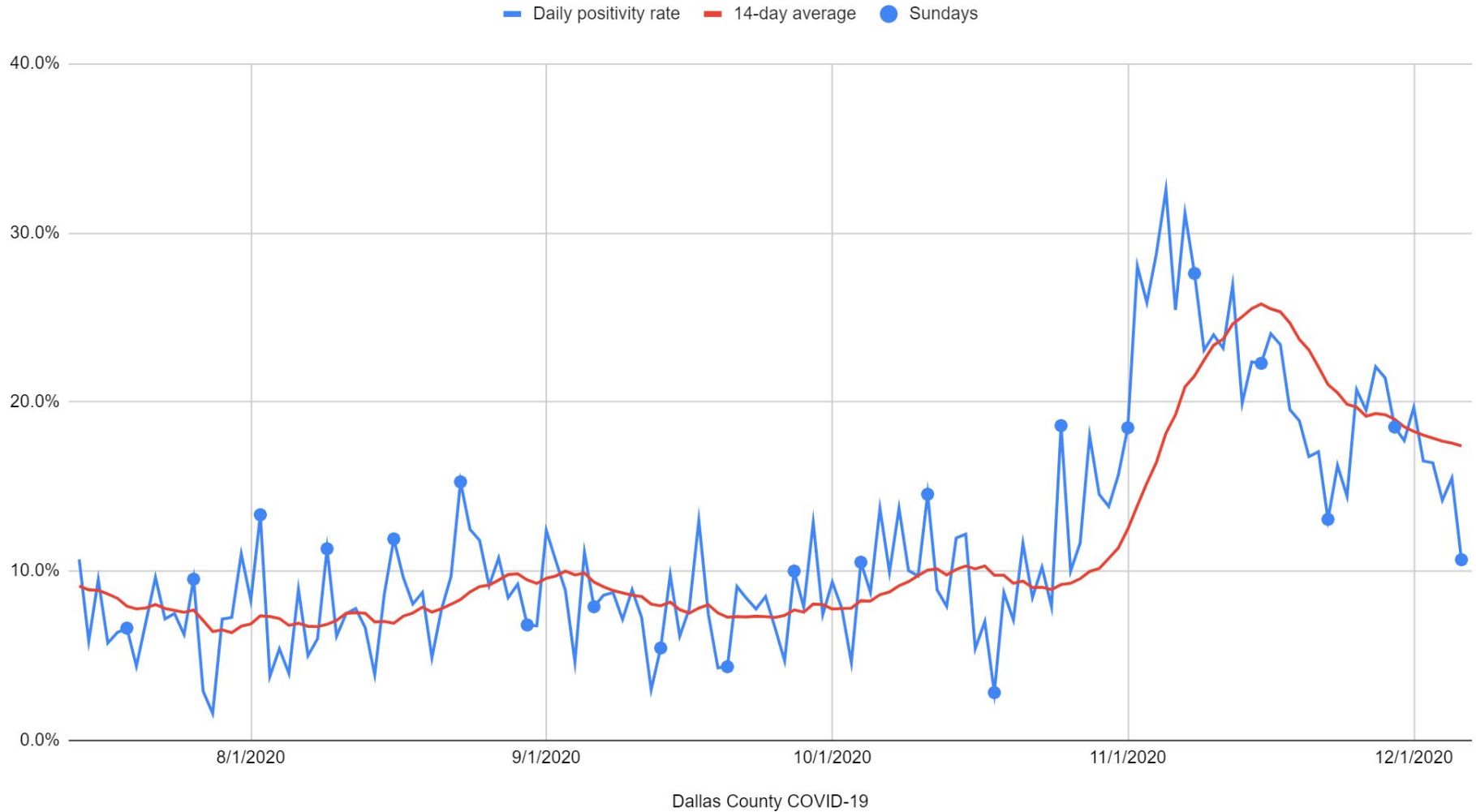
# Things to Consider

- **Equity** - traditionally underserved groups are disproportionately impacted by not being in school
- **CDC Recommendations** about the importance of being in school
- **Timeline** to traditional holidays/family gatherings for many of our families and staff
- **Family Choice** in the Model of Instruction
- **Stress on Students** - Especially Transitions/Desire to Return
- **Stress on Staff** Members/Desire to Return
- **Stress on Families**/Desire to Return
- **“Only” 7 school days**
  - Middle Level will be 7 weeks, WHS - 7 days is 14 days, 7 days is 4% of the school year
- **Activities and Athletics**
- **Our Role in the Community**

# Dallas County Positivity Rate

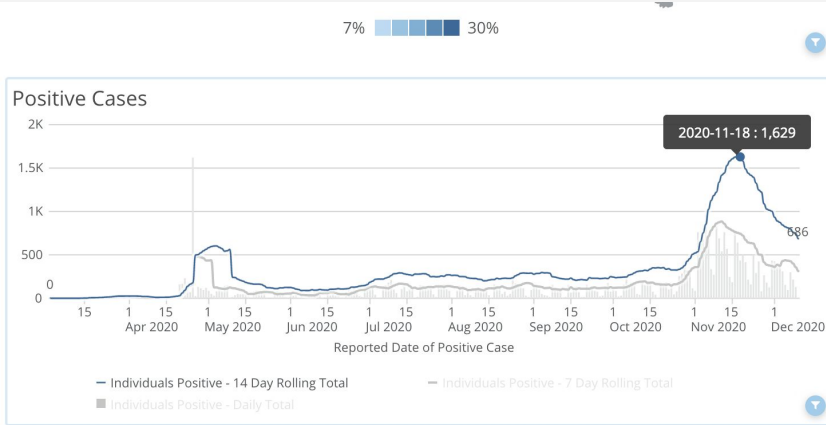


## Dallas County Positivity Rates





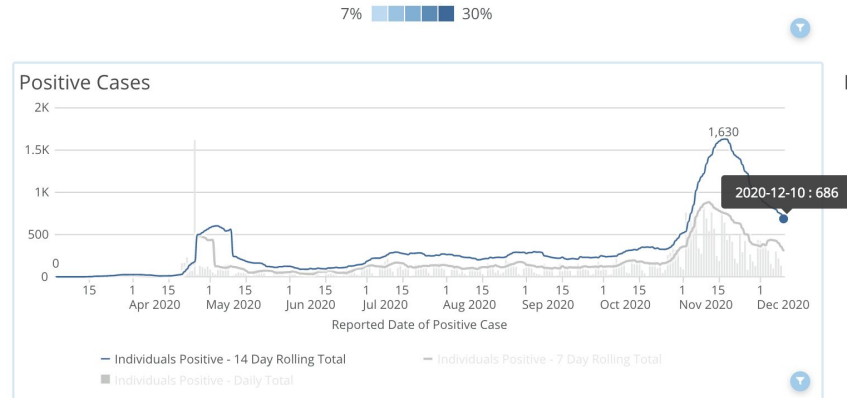
# Dallas County Positive Cases



County	Positive Cases	Cases Per 100,000 Population
Dallas	7,008	7,771

November 18 -  
1,629

December 10 -  
686



County	Positive Cases	Cases Per 100,000 Population
Dallas	7,008	7,771

# Dashboard



## November 18 Dashboard

67	Student(s) currently testing positive (total students *9,217 in-person)
23	Staff members currently testing positive (total staff 1,800)
503	Staff and/or students currently isolating/quarantining by Dallas County Public Health
397	Number of individuals being monitored by school nurses in buildings.

## December 10 Dashboard

38	Student(s) currently testing positive (total students *9,217 in-person)
13	Staff members currently testing positive (total staff 1,800)
80	Staff and/or students currently isolating/quarantining by Dallas County Public Health
1	Number of individuals being monitored by school nurses in buildings.
<a href="#">Brookview</a> Elementary Eason Elementary <a href="#">Prairieview</a> School Radiant Elementary <a href="#">Shuler</a> Elementary Timberline School Waukee Elementary Waukee Middle School Waukee High School	Current buildings or programs with known positive cases.  <i>*All individuals impacted have been contacted.</i>

# Student Positive Cases



Total number of positive cases as of today: 38

Numbers today per building:

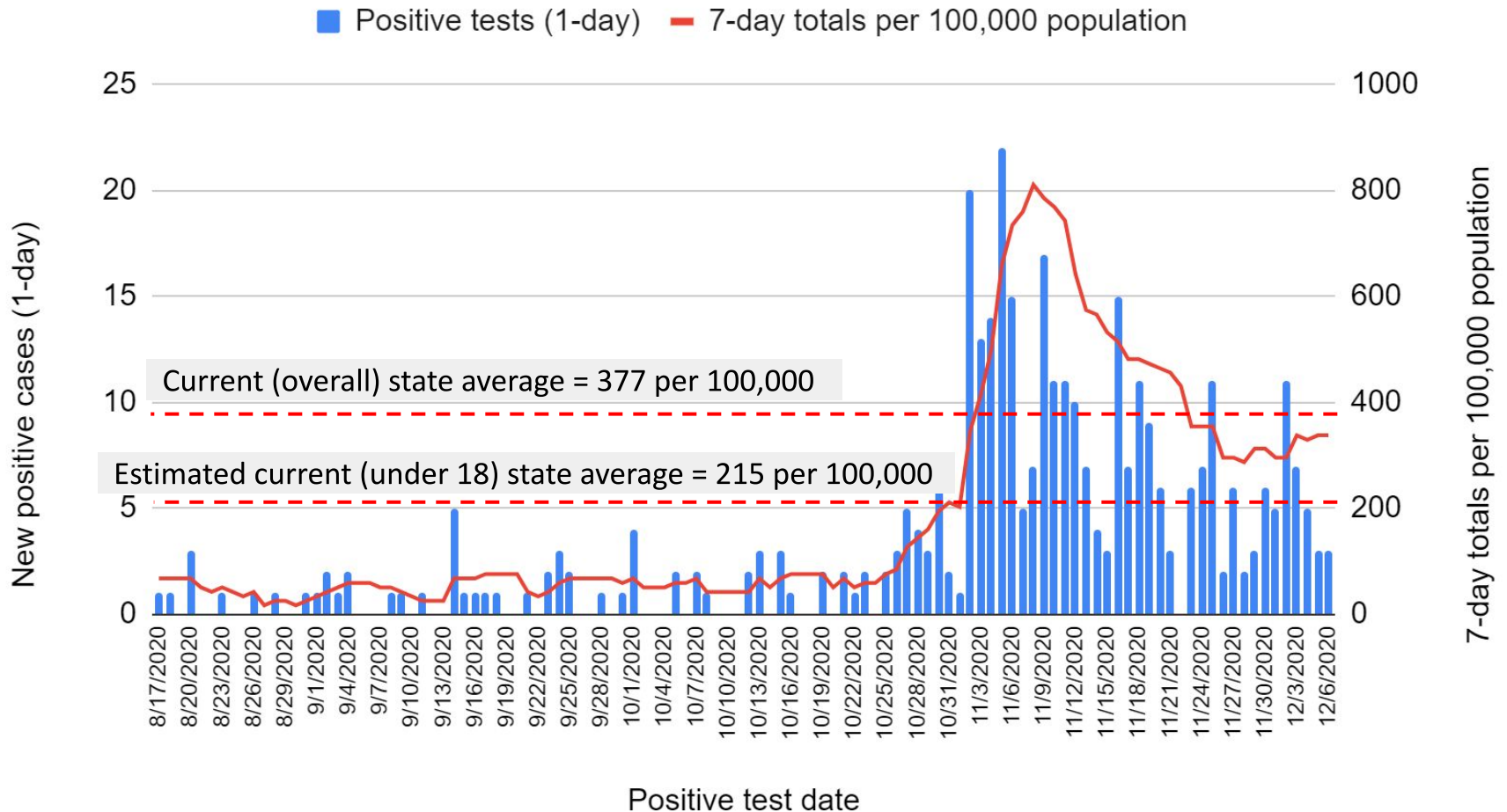
Grant Ragan, Maple Grove, South Middle, Walnut Hills, Woodland Hills	0
Brookview, Eason, Radiant, Shuler, Timberline, Waukee Elementary	Cases present in buildings and programs (between 1-5)
Prairieview School	6
Waukee Middle School	9
Waukee High School	11

# Student Positive Cases

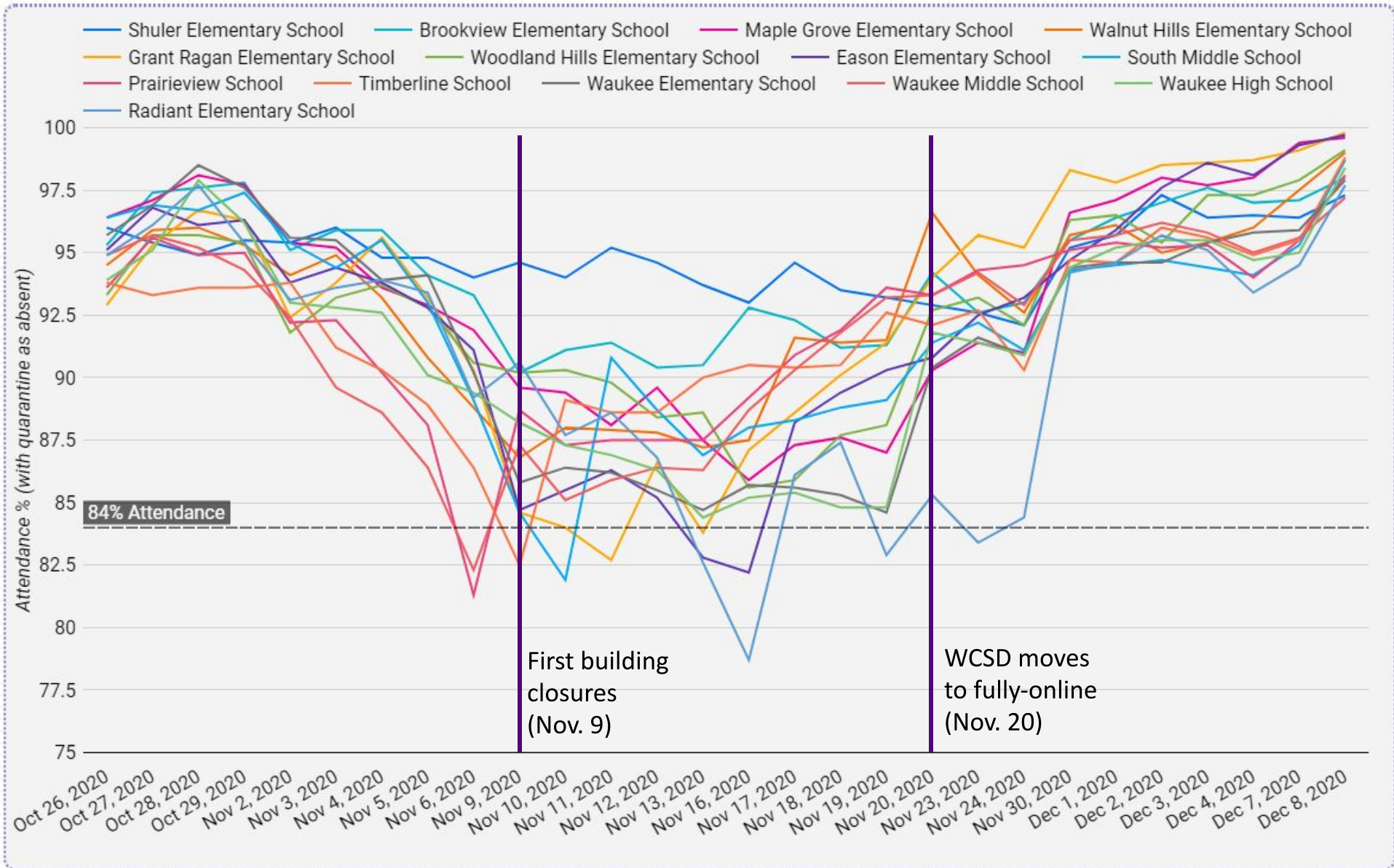


Trailing 7-day totals of student COVID cases, with per 100,000 on right axis

WCSD student COVID+ cases



# Student Attendance Data

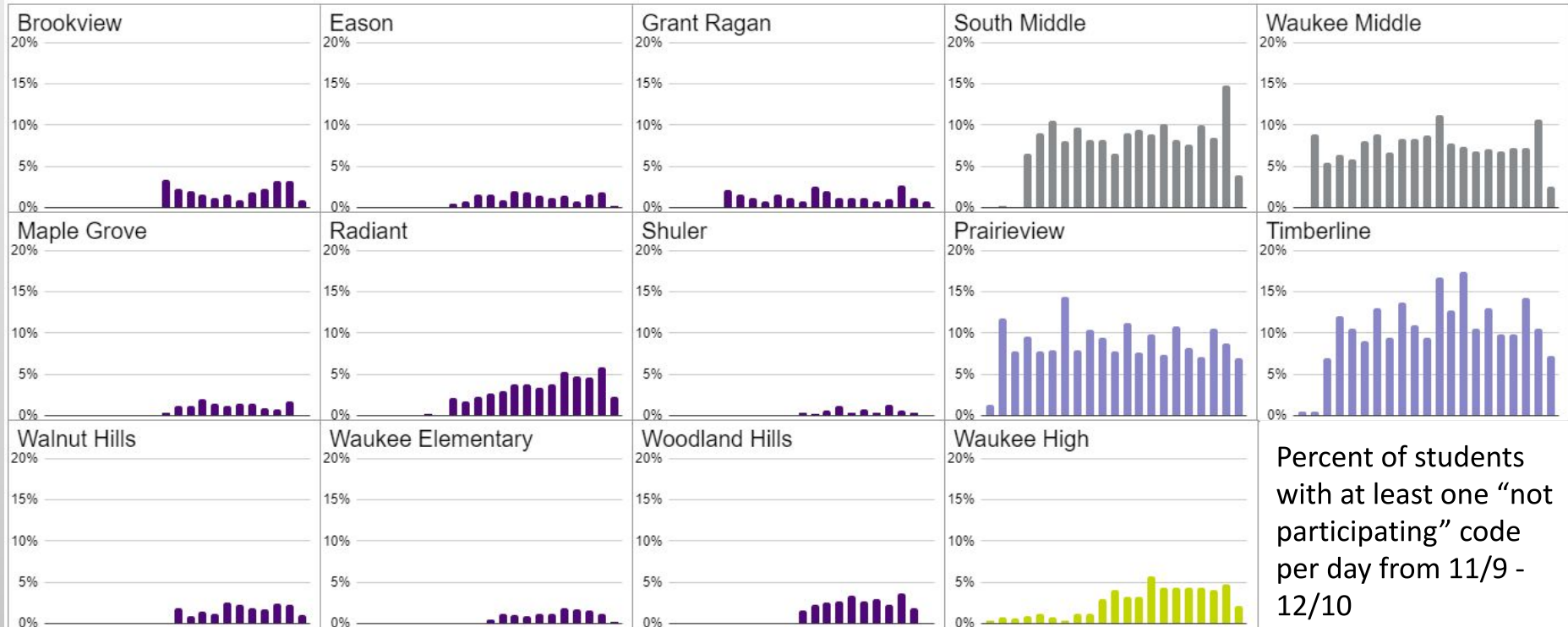


\* students in quarantine are treated as absent for this dataset

# Student Non-participation Data



Students who are absent from an online class are marked “not participating” for attendance. This data does not include students who are in isolation or quarantine, and only shows data for students who selected in-person learning for the fall semester, but were moved to online when their building (or the whole district) went fully online.







# Staff Positive Cases

**Total number of positive cases as of today: 13**

**\*3 staff members will be back tomorrow (Friday) and 5 staff members will be back Monday, Dec. 14.**

**Numbers today per building:**

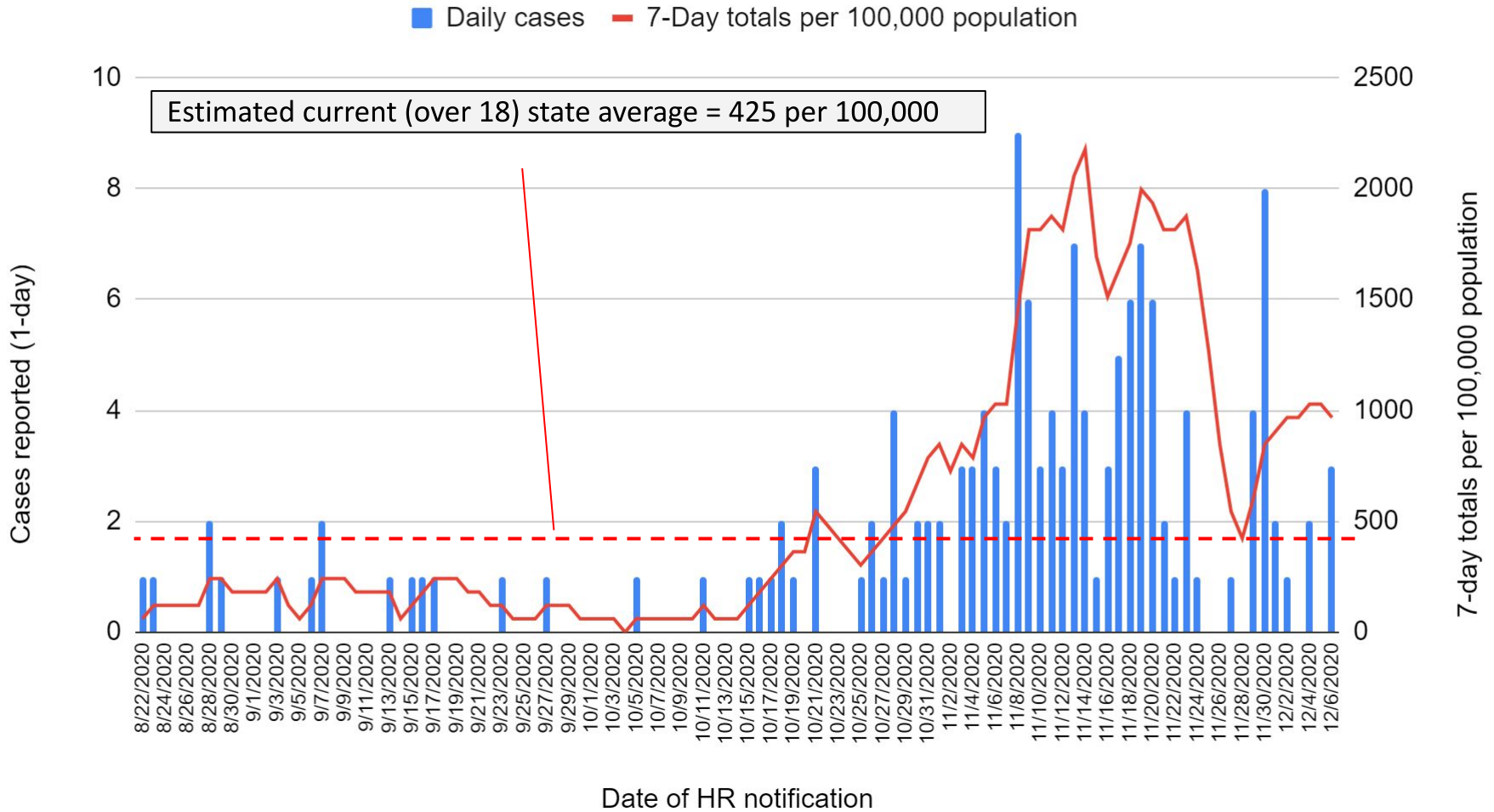
<b>Eason, Maple Grove, Radiant, Shuler, Waukee Elementary, Prairieview, South Middle, Timberline, Waukee High School</b>	<b>Cases present in buildings and programs (between 1-5)</b>
<b>Brookview, Grant Ragan, Walnut Hills, Woodland Hills, Waukee Middle</b>	<b>0</b>

# Staff Positive Cases



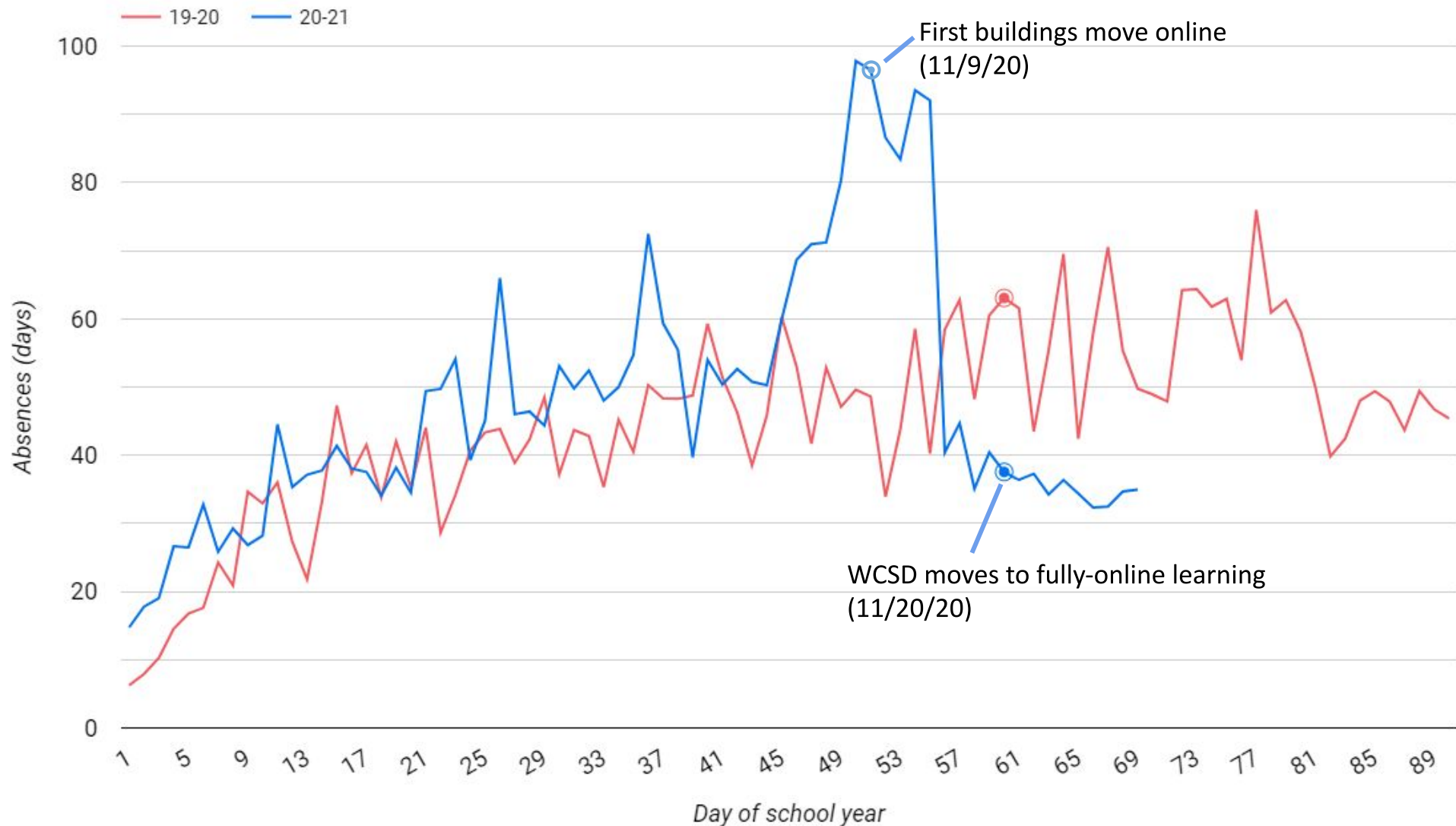
Trailing 7-day totals of staff COVID cases, with per 100,000 on right axis

WCSD Staff COVID+ cases

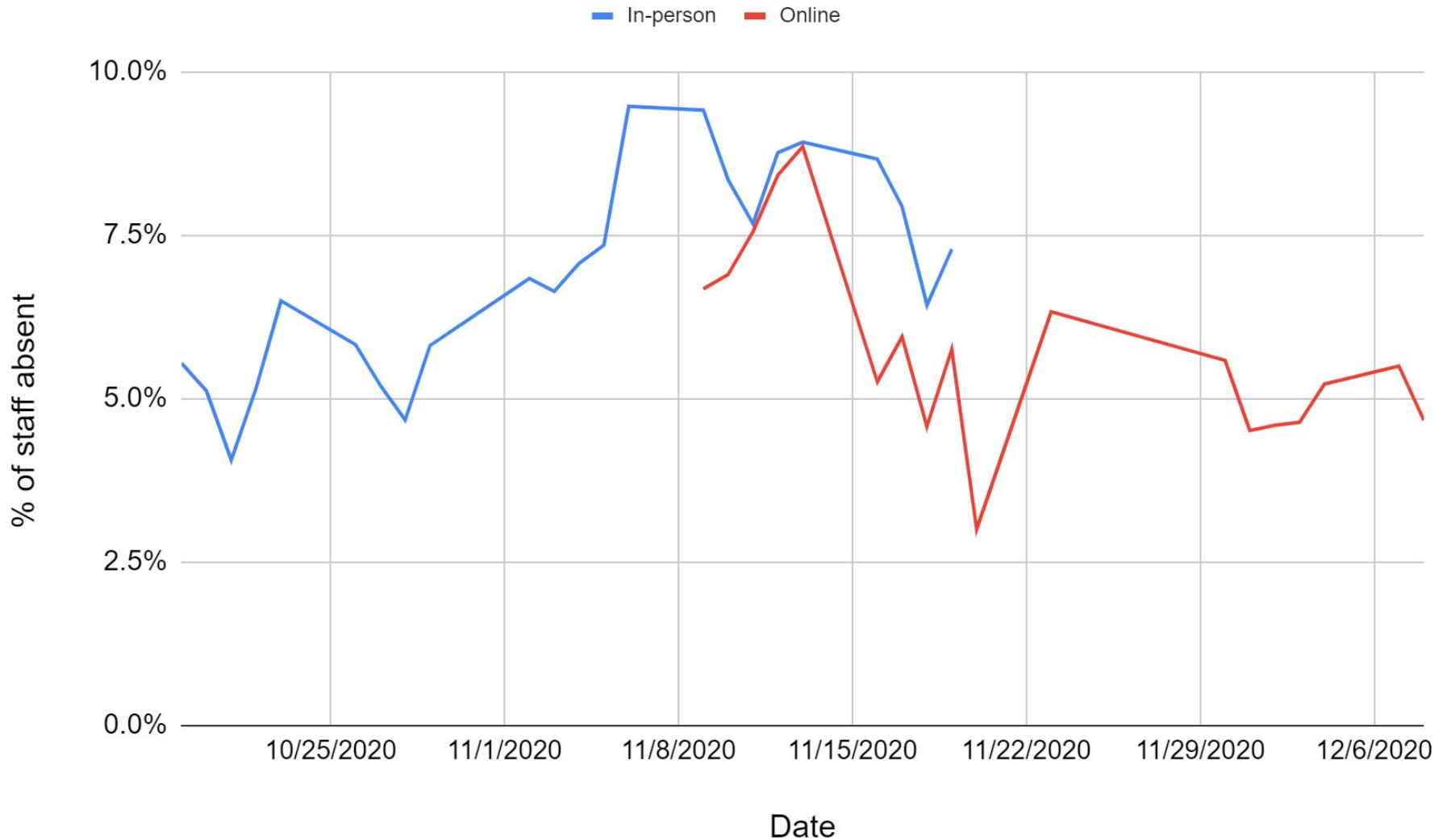


Current (overall) state average = 377 per 100,000

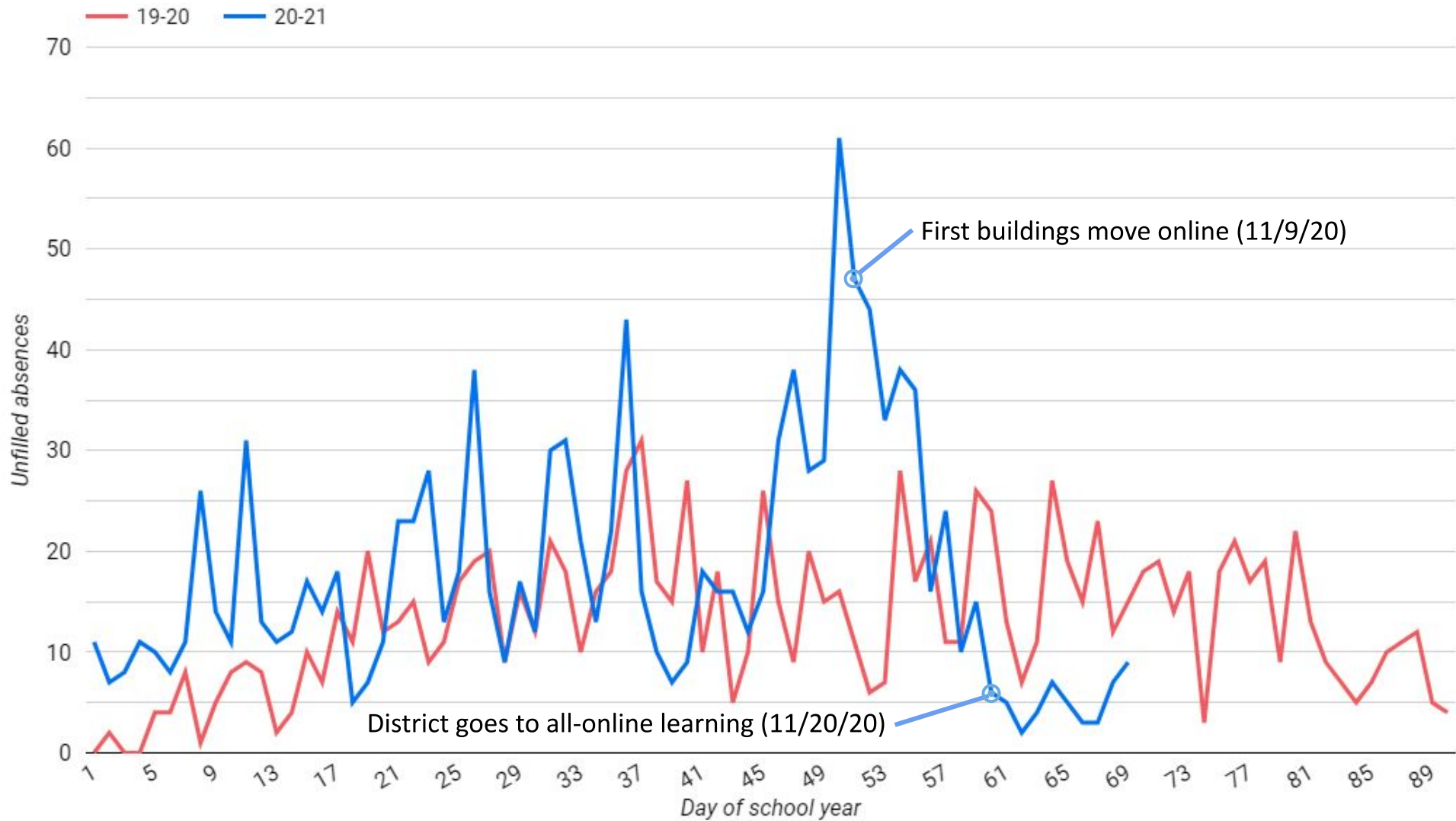
# Total daily teacher and associate absences due to illness (personal and family)



# Total absence rate for teachers and associates by date, building status (online / in-person)

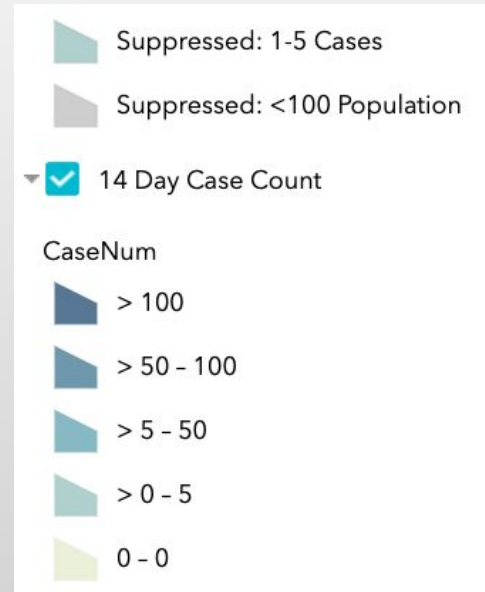
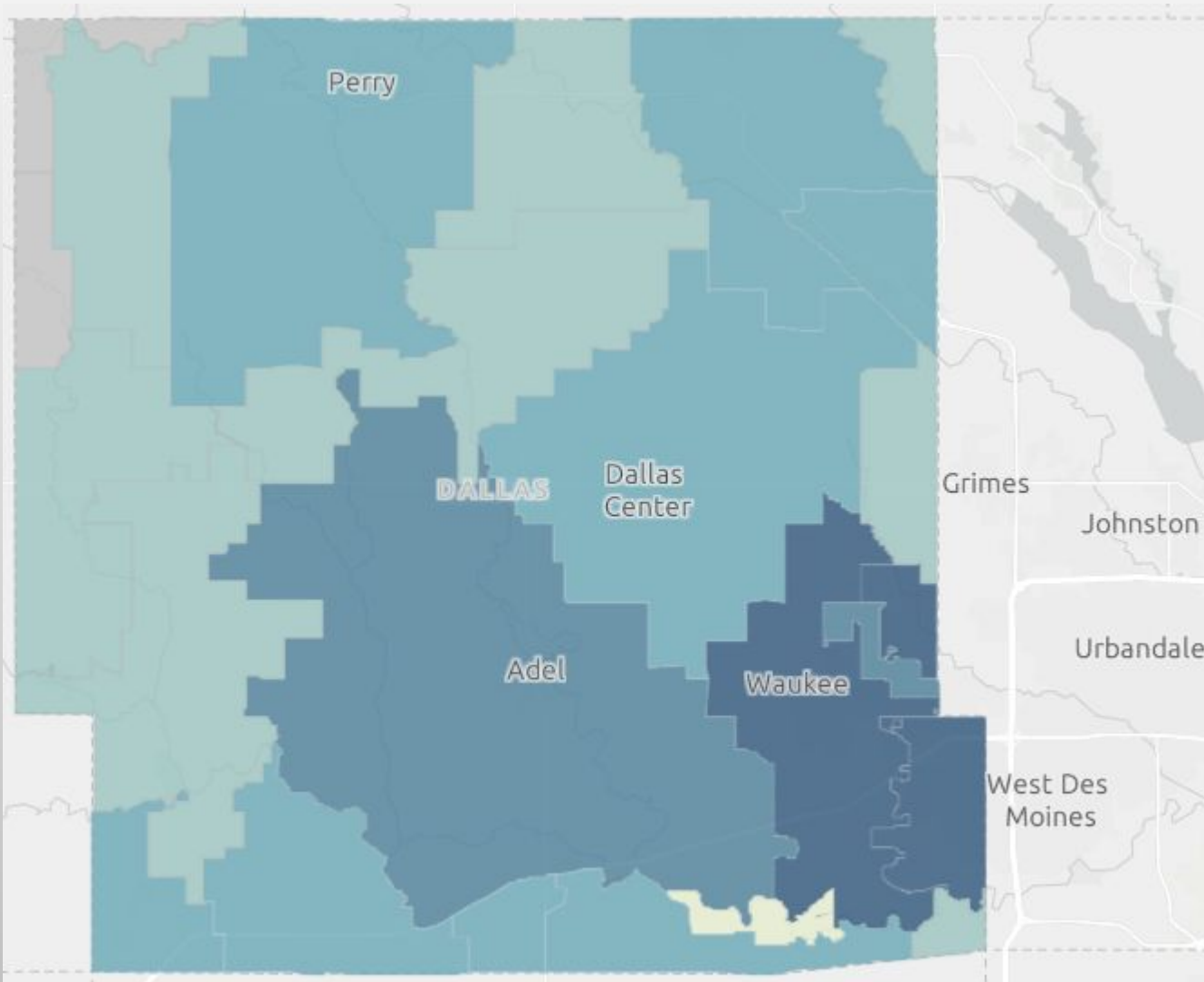


# Total daily unfilled substitute vacancies (teachers and associates)





# Zip Code Data



<b><u>Dallas County - WCSD</u></b>	
Clive 53	(102, 81, 49)
Urbandale 88	(156, 115, 48)
Waukee 149	(368, 289, 114)
West Des Moines 116	(282, 187, 90)



# Recommendation

The administration recommends the district return to hybrid instruction beginning Monday, December 14th.