



Legislative Learning & Advocacy Town Hall
Dec. 9, 2023



Introductions

Waukee Community School District

- Wendy Marsh - Board President
- Dr. Brad Buck - Superintendent
- Sarah Enfield - Chief Financial Officer

Legislators

- Senator Claire Celsi
- Senator Sarah Trone Garriott
- Senator Jack Whitver (unable to attend)
- Representative Dan Gehlbach
- Representative Kenan Judge (unable to attend)
- Representative Mary Madison
- Representative David Young

* Special thank you to our colleagues at IASB and ISFIS for assistance with data



Our District

Our schools serve students from Clive, Urbandale, Waukee, and West Des Moines living in the 55 square miles of our district boundaries - all are residents of Dallas County.



19+

School Buildings



2,275+

Staff



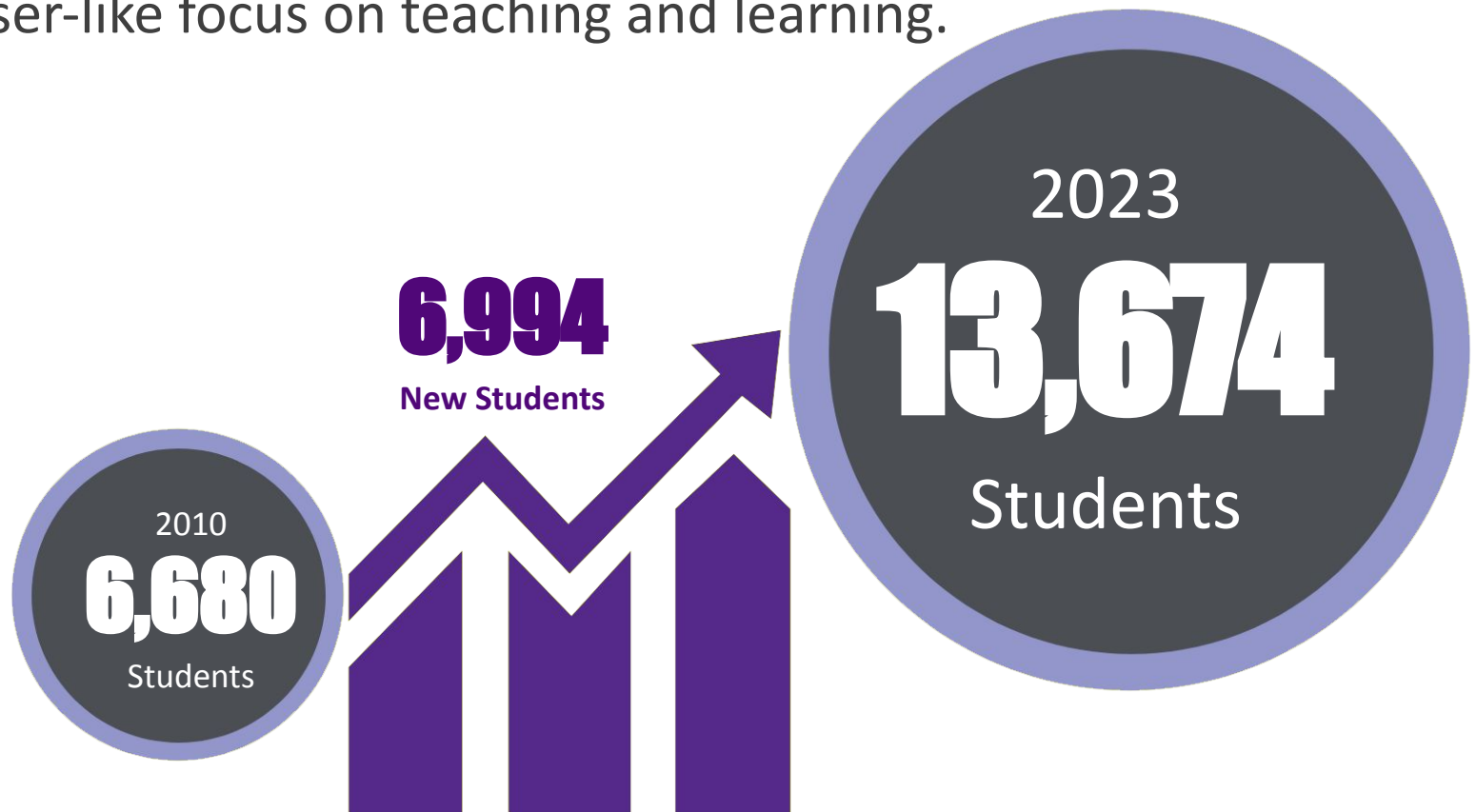
80

Number of First Languages or
Dialects Spoken by Students

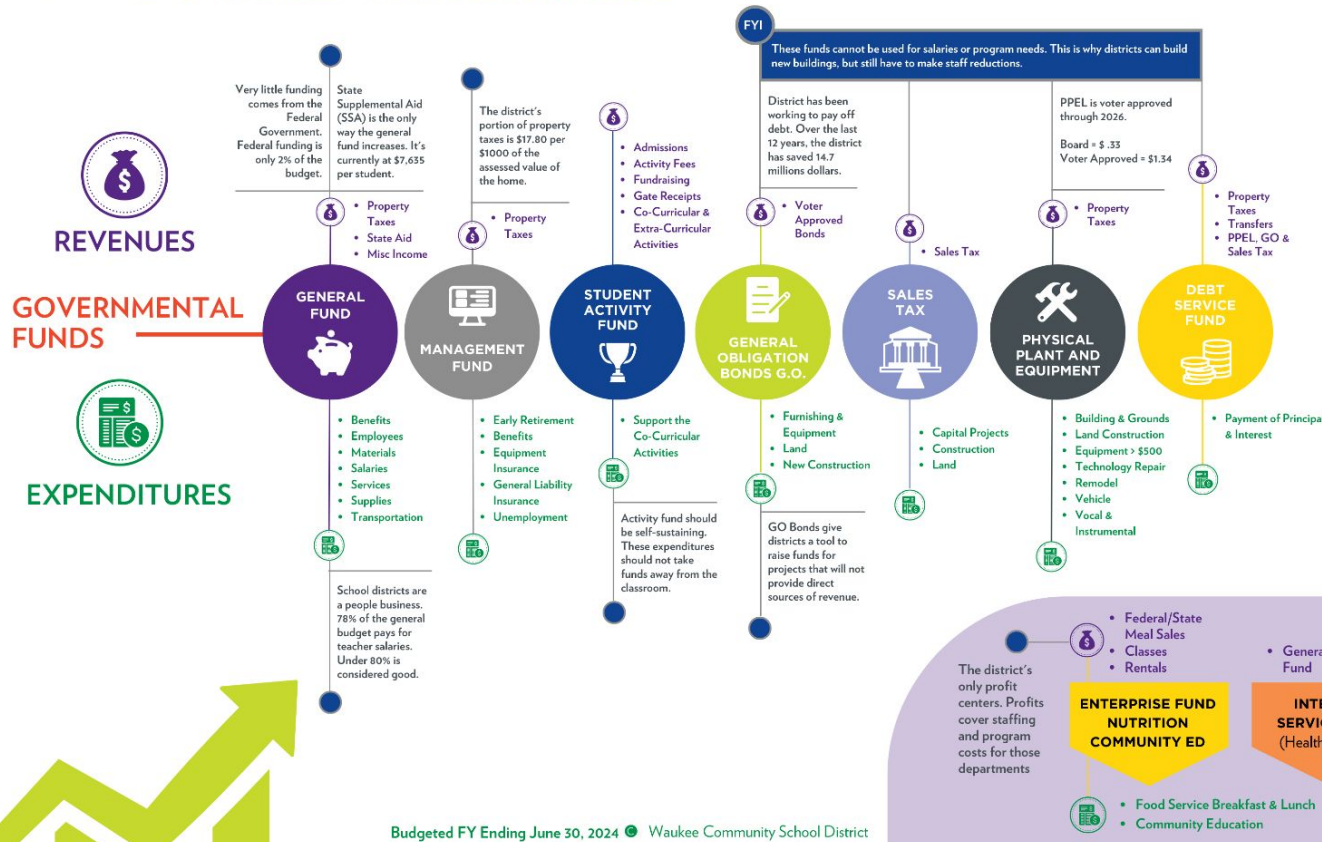


Enrollment Growth

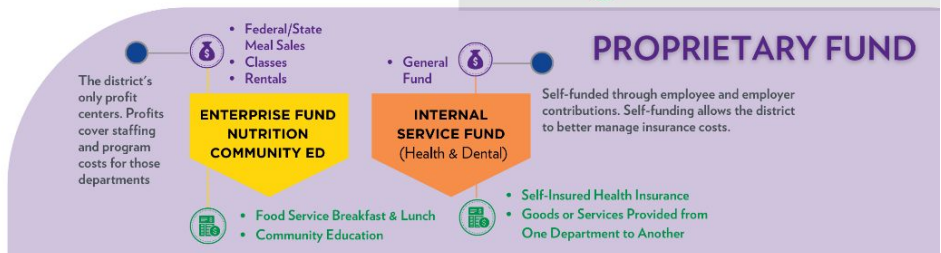
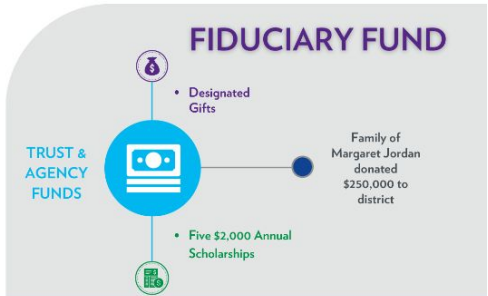
Waukee Community School District is the fifth largest district in Iowa and continues to keep a laser-like focus on teaching and learning.



Waukee Community School District FUND SUMMARY



! Waukee Community School District prides itself on maintaining transparency with the management of public funds. State laws, rules, and regulations direct districts on how to spend money and what funds can be used to purchase certain items.



Budgeted FY Ending June 30, 2024 • Waukee Community School District

	General	Management	Student Activity	Sales Tax	PPEL	Other Capital Projects	Debt Service	Enterprise	Nutrition	Total
Revenues	\$170,768,373	\$90,000	\$2,540,000	\$15,175,000	\$11,833,986	\$1,500,000	\$41,921,949	\$3,370,000	\$10,400,000	\$257,599,308
Total Expenditures	\$173,084,434	\$3,550,000	\$2,750,000	\$19,990,000	\$6,725,000	\$55,000,000	\$42,095,000	\$3,085,000	\$10,365,000	\$316,644,434

www.waukeeschools.org/departments/business-services/district-funding

Per Student Spending Comparison



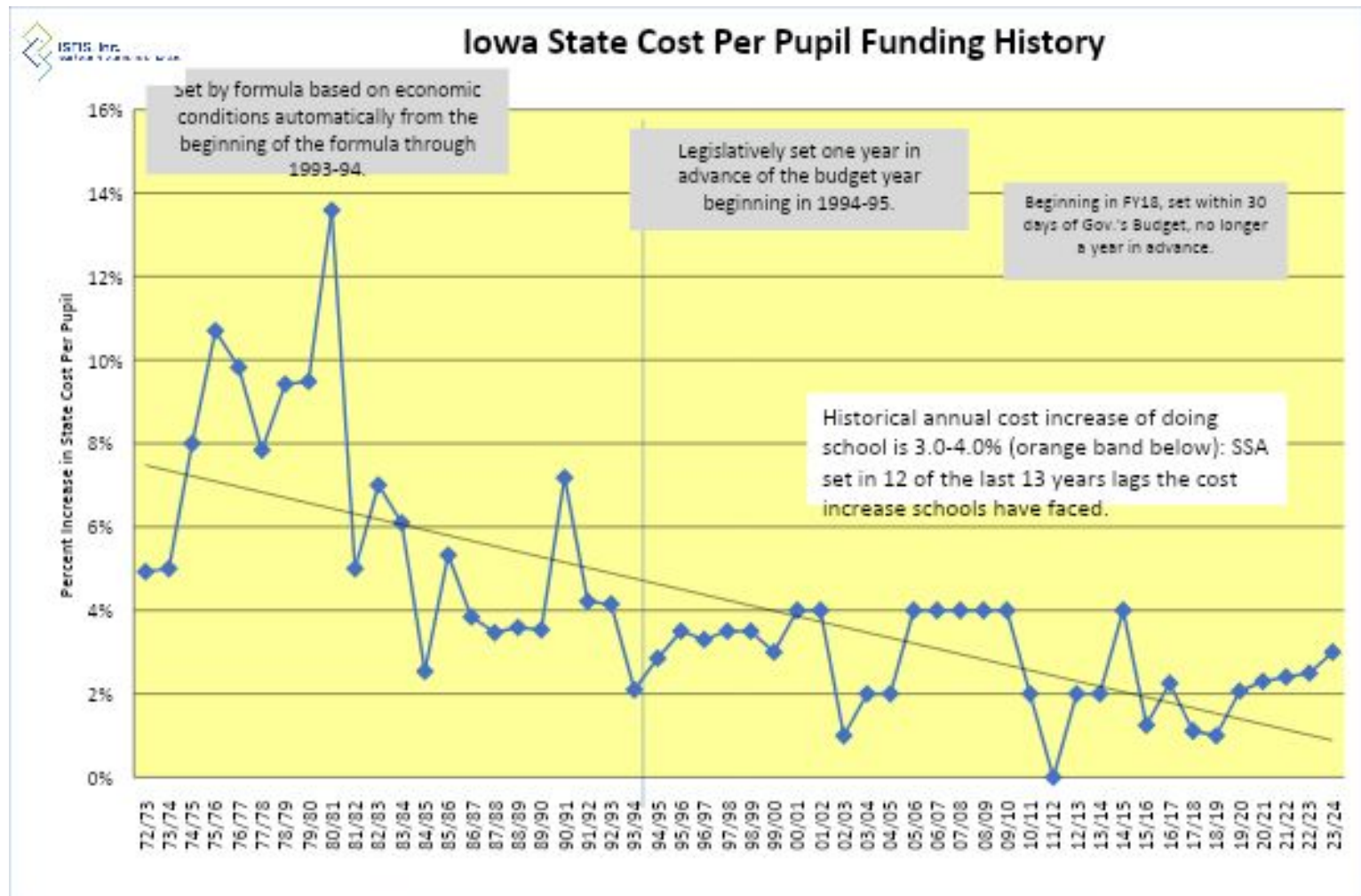
Iowa School Districts Cost Per Student - General Fund (FY 2022)

General Fund (total cost divided by number of students served district wide)	Urbandale	West Des Moines	Johnston	Des Moines	Waukee	Southeast Polk	Ankey	Iowa City	Davenport	Cedar Rapids
Sal-Benefit Per Student	\$10,185	\$10,640	\$9,667	\$12,439	\$9,199	\$10,066	\$9,566	\$12,038	\$11,470	\$11,997
Sal-Benefit Per Student Rank	200	133	259	29	297	210	268	40	64	42
Sal-Benefit P-S State Min	\$3,966	\$3,966	\$3,966	\$3,966	\$3,966	\$3,966	\$3,966	\$3,966	\$3,966	\$3,966
Sal-Benefit P-S State Avg.	\$10,743	\$10,743	\$10,743	\$10,743	\$10,743	\$10,743	\$10,743	\$10,743	\$10,743	\$10,743
Sal-Benefit P-S State Median	\$10,391	\$10,391	\$10,391	\$10,391	\$10,391	\$10,391	\$10,391	\$10,391	\$10,391	\$10,391
Total General Fund Per Student	\$13,286	\$13,531	\$12,335	\$15,750	\$11,797	\$12,427	\$12,020	\$14,098	\$14,257	\$15,239
Total General Fund Per Student Rank	200	187	277	64	302	275	294	154	142	91
Total General Fund P-S State Min	\$9,466	\$9,466	\$9,466	\$9,466	\$9,466	\$9,466	\$9,466	\$9,466	\$9,466	\$9,466
Total General Fund P-S State Avg.	\$15,271	\$15,271	\$15,271	\$15,271	\$15,271	\$15,271	\$15,271	\$15,271	\$15,271	\$15,271
Total General Fund P-S State Median	\$13,962	\$13,962	\$13,962	\$13,962	\$13,962	\$13,962	\$13,962	\$13,962	\$13,962	\$13,962

SSA History - School Funding

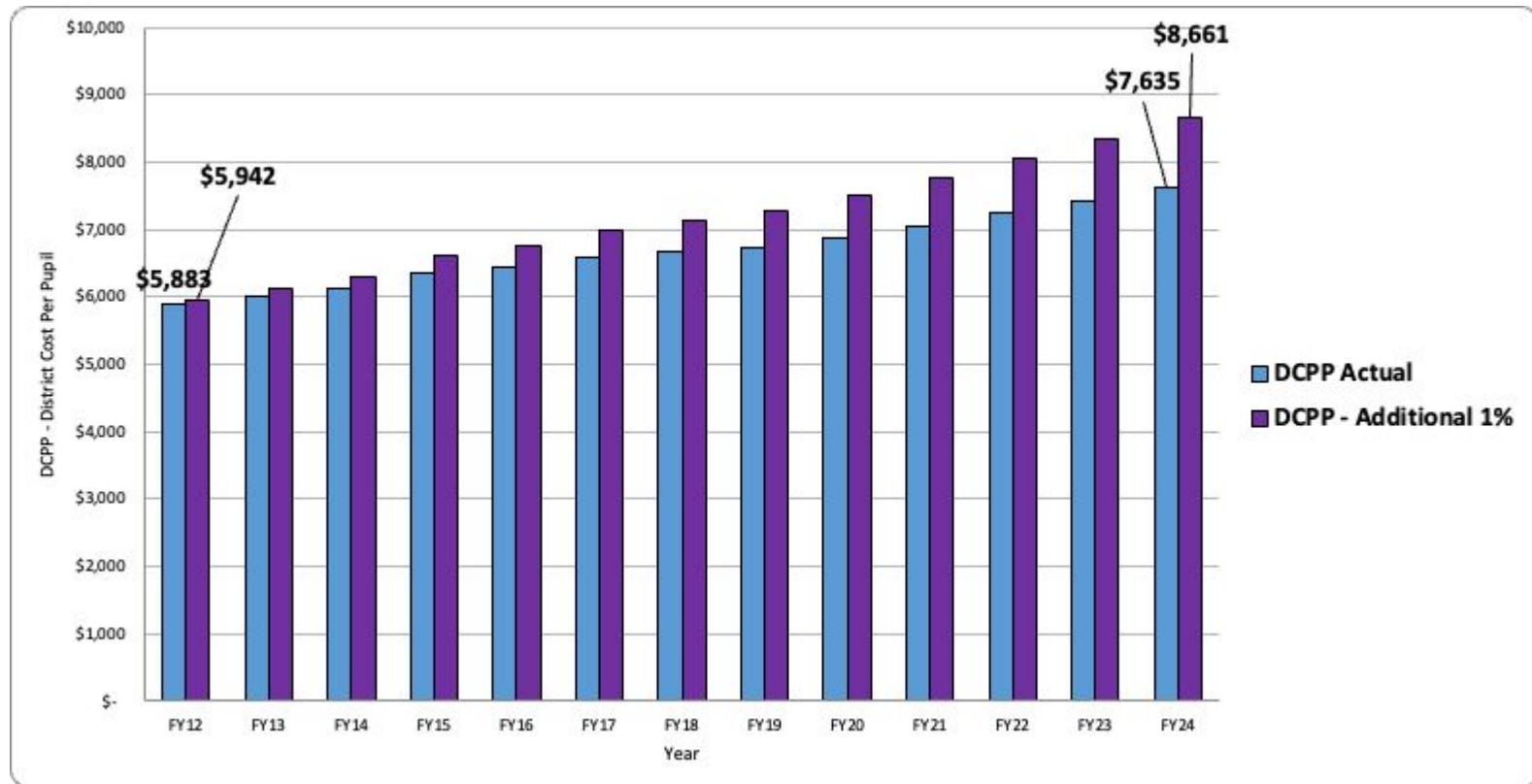


The Iowa funding formula always lags by one year. This means we educate 500+ students each year without funds from the state (approx \$4M).





“What if” Additional 1% SSA - 10 Years



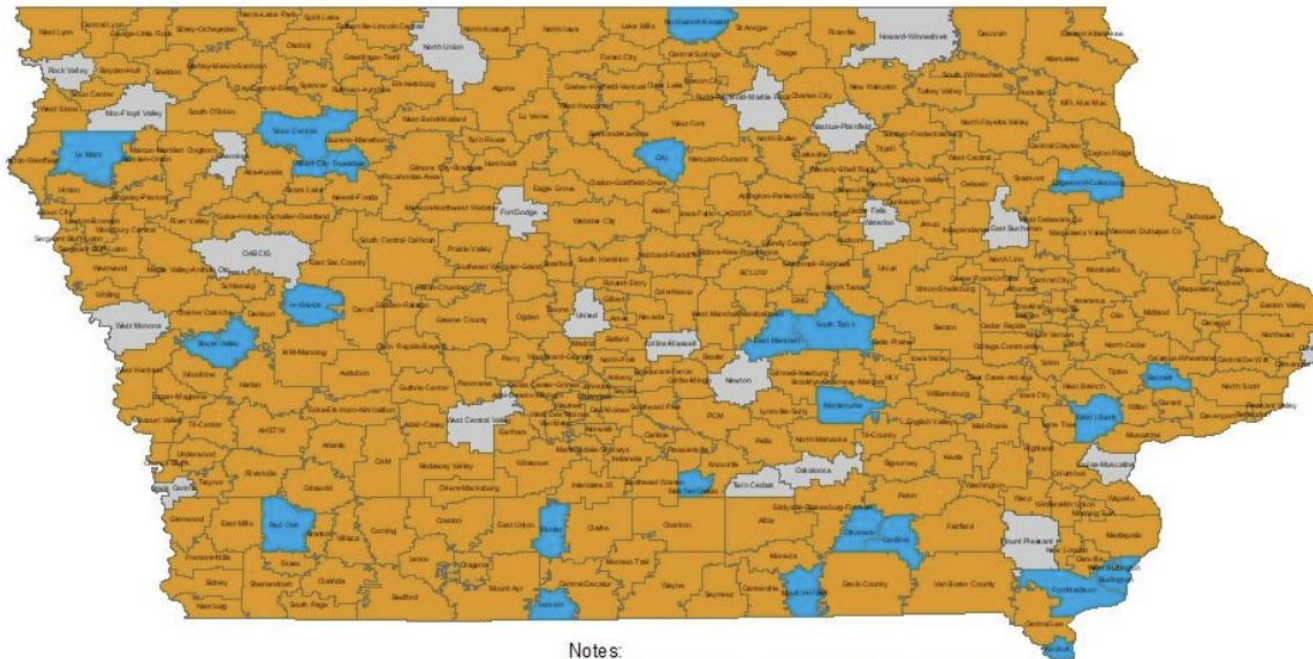
Special Education Funding



Iowa Association of School Boards Special Education Fund Balances - FY 2022

[Click Here for District Specific Data](#)

MSA Amount = \$144.5 Million
Total Positive Balance Amount = \$5.7 Million
Total Amount Redistributed = \$2.4 Million



Legend

District Special Education Fund Balance Status - FY 2022

- Districts with a Negative Balance - Requesting MSA (282 Districts)
- Districts with a Positive Balance (22 Districts)
- Districts with a Positive Balance and a Redistribution Amount (23 Districts)

Notes:

Districts with a negative special education fund balance may request a modified supplemental amount (MSA) to recoup special education costs that exceed special education revenue. Districts with a positive balance over 10.0% generated weighted dollars are required to have the funds in excess of 10.0% redistributed by the state to districts with a negative balance.

Sources:

Iowa Department of Education, Special Education Fund Bal. file
IASB analysis and calculations

Waukeee CSD Challenges FY24



- General fund cash
- Inflation pressures - SSA vs. CPI
 - FY23 - 2.5% SSA with 6-10% inflation
 - FY24 - 3% SSA with 2.5-6% inflation
- Student growth - 500+ per year
- Special education funding and deficit
- Technology expenditures (new, replacement, software)
- Staffing, operating, supplying a new building each year
 - FY22 - **NWHS**
 - FY23 - **Sugar Creek**
 - FY24 - **Trailridge & Natatorium**
 - FY25 - Waterford Elementary
 - FY26 - North Middle School
 - FY27?- Elementary #12 (timing subject to enrollment needs)
- Interest rates (revenue and borrowing)
- Macro economic factors, state legislative changes
- 1/1/23 valuations (revaluation, rollback changes)



Legislative Priority: Student Achievement

Providing varied pathways and supporting student plans for success in their PK-12 years—and beyond—is essential work in Iowa Public Schools.

Examples of areas of need and ongoing support include:

- Deliver coaching, training, and financial support for any new initiative from the Iowa Department of Education and/or the Legislature.
- Increase resources to expand work-based learning opportunities in Iowa including expanded funding for additional Career Counselors.
- Assure that the assessments to which schools are being held accountable align to the expectations in the Iowa Core.



Legislative Priority: Teacher Recruitment and Licensure

Candidate pools for teaching positions are dwindling and, in many cases, applicants do not exist for positions.

Some potential solutions include:

- Increasing teacher pay
- Considering other, high-quality pathways to teacher certification
- Continuing to fund para to teacher apprenticeships
- Creating pathways for paid student teaching
- Improving reciprocity agreements with other states to expand access
- Taking deliberate action to highlight the power of teaching and the importance of the role



Legislative Priority: Supplemental State Aid

Supplemental State Aid is the lifeblood of public school districts.

When inflation was low, the sentiment from the Legislature was that SSA could be low and in line with inflation. There has not been a corresponding increase in tandem with increased inflation.

Recently, the Legislature has provided school districts with additional flexibility to use “siloed” funds. Increased flexibility is not increased funding and, even if access to a fund is available, it is a short-term fix.

There is money available to provide 4-6% SSA.



Legislative Priority: Mental Health

Student mental health challenges, especially in the wake of the pandemic, have increased significantly.

While our local school services have also increased, we still have a significant need for statewide investment in—and a set of solutions for—youth mental health.



Legislative Priority: Dropout Prevention/At-Risk

Dropout Prevention/At-Risk funding can be up to 5% of the total valuation of the District. Several years ago, the Legislature froze every school district at the percentage they were accessing at that time—which for Waukee CSD is 2.6%.

As our District has increased in enrollment, so have the complexities of the needs of our students. Being able to increase the rate of local tax by 0.5% each year to a maximum of 5% would lead to an increase of over \$1M annually to help support our students who most need it.



Advocacy - How can you help?

Contact your legislators and **share your story**

Email, mail, phone call

Find your legislator:

www.legis.iowa.gov/legislators

Waukee CSD Legislative Priorities:

waukeeschools.org/board/legislative-priorities



Local Legislators

Chance to hear from our local legislators

- **Senator Sarah Trone Garriott:** Senate District 14
 - sarah.trone.garriott@legis.iowa.gov
- **Senator Jack Whitver:** Senate District 23
 - jack.whitver@legis.iowa.gov
- **Representative Kenan Judge:** House District 27
 - kenan.judge@legis.iowa.gov
- **Representative David E. Young:** House District 28
 - david.young@legis.iowa.gov
- **Representative Dan Gehlbach:** House District 46
 - dan.gehlbach@legis.iowa.gov



Contact Information

President Wendy Marsh - wmarsh@waukeeschools.org

Dr. Brad Buck - bbuck@waukeeschools.org

Sarah Enfield - senfield@waukeeschools.org

QUESTIONS?

