



WAUKEE

COMMUNITY SCHOOL DISTRICT

Legislative Learning & Advocacy Town Hall

Dec. 7, 2024



Introductions

Waukee Community School District

- Michael Schrodt - Board President
- Dr. Brad Buck - Superintendent
- Sarah Enfield - Chief Financial Officer

Legislators

- Senator Claire Celsi
- Senator Sarah Trone Garriott
- Senator Jack Whitver (unable to attend)
- Representative Dan Gehlbach (unable to attend)
- Representative Kenan Judge
- Representative Mary Madison
- Representative David Young (unable to attend)

* Special thank you to our colleagues at IASB and ISFIS for assistance with data



Our District

Our schools serve students from Clive, Urbandale, Waukee, and West Des Moines living in the 55 square miles of our district boundaries - all are residents of Dallas County.



22

Learning Centers



2,455

Staff



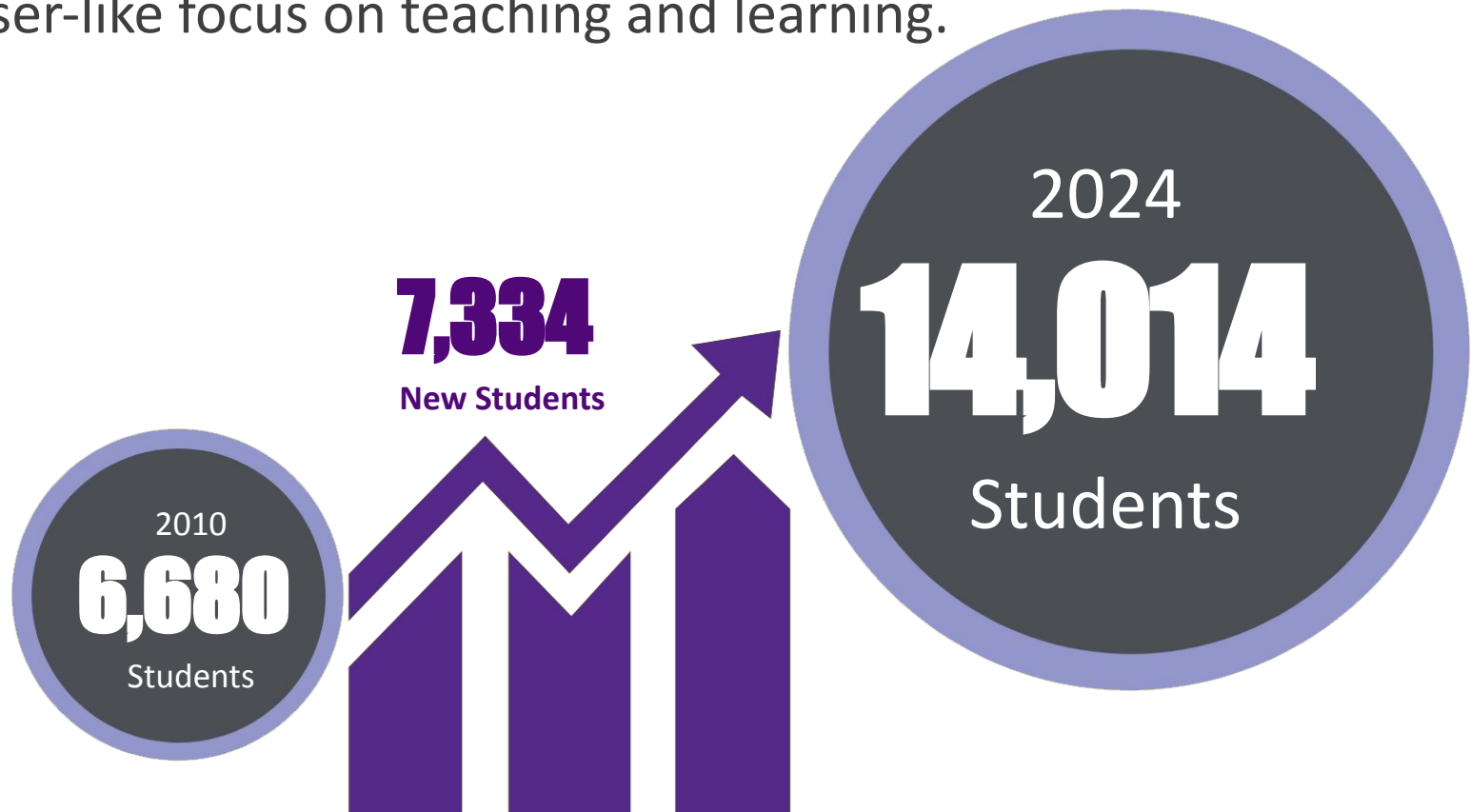
96

Number of First Languages or
Dialects Spoken by Students



Enrollment Growth

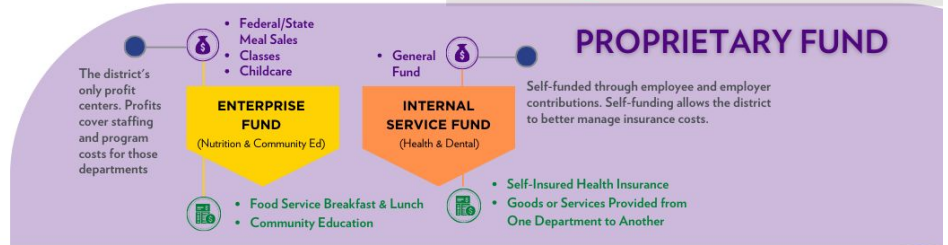
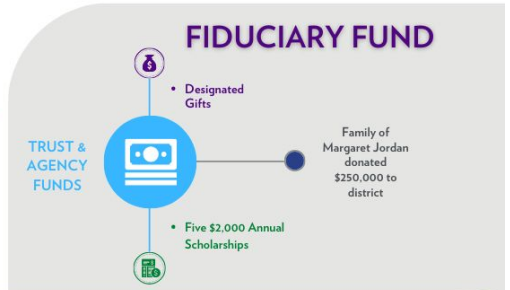
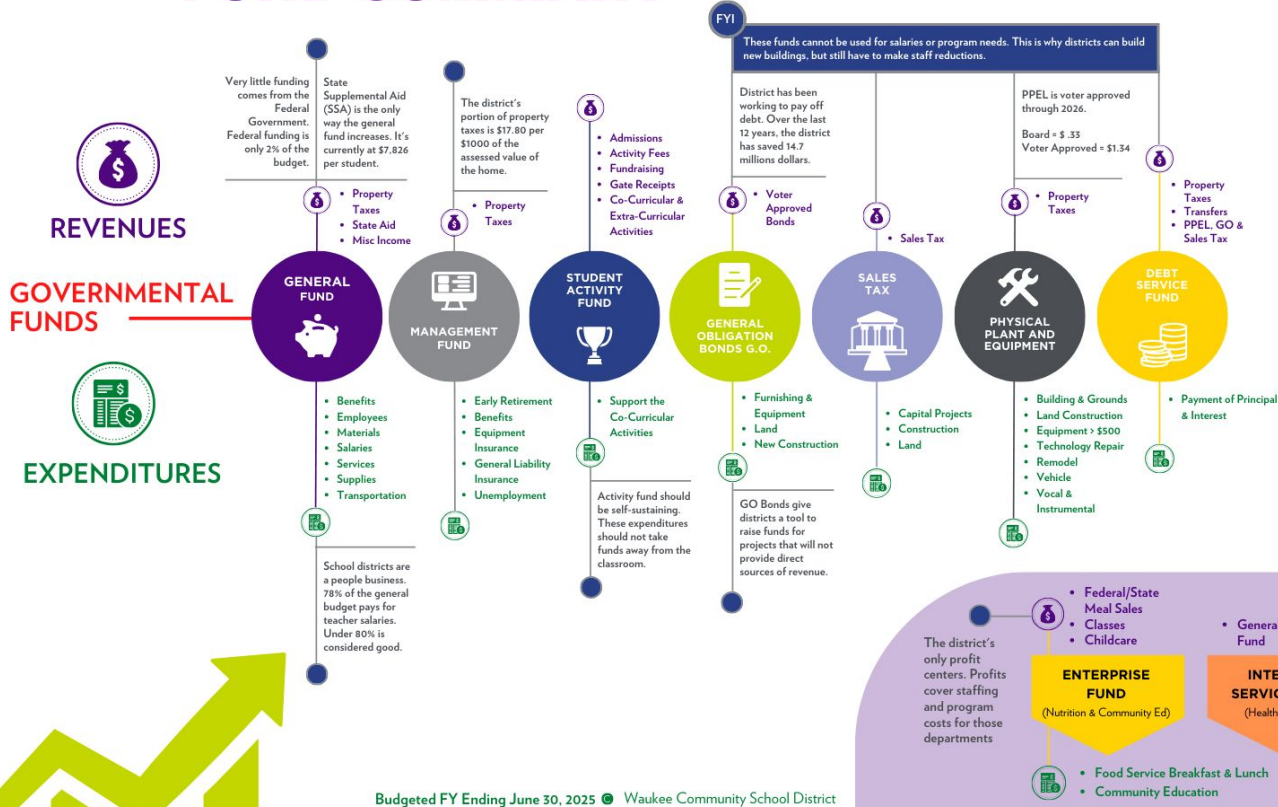
Waukeee Community School District is the fifth largest district in Iowa and continues to keep a laser-like focus on teaching and learning.





Waukee Community School District FUND SUMMARY

! Waukee Community School District prides itself on maintaining transparency with the management of public funds. State laws, rules, and regulations direct districts on how to spend money and what funds can be used to purchase certain items.



Budgeted FY Ending June 30, 2025 • Waukee Community School District

	General	Management	Student Activity	Sales Tax	PPEL	Other Capital Projects	Debt Service	Enterprise	Nutrition	Total
Revenues	\$185,318,660	\$1,042,500	\$2,865,000	\$19,900,000	\$12,905,225	\$47,000,000	\$44,579,875	\$3,500,000	\$10,150,000	\$327,261,260
Total Expenditures	\$185,361,419	\$3,800,000	\$2,650,000	\$11,750,000	\$7,750,000	\$75,000,000	\$43,839,969	\$3,200,000	\$9,200,000	\$342,551,388

Per Student Spending Comparison



Iowa School Districts Cost Per Student - General Fund (2024)

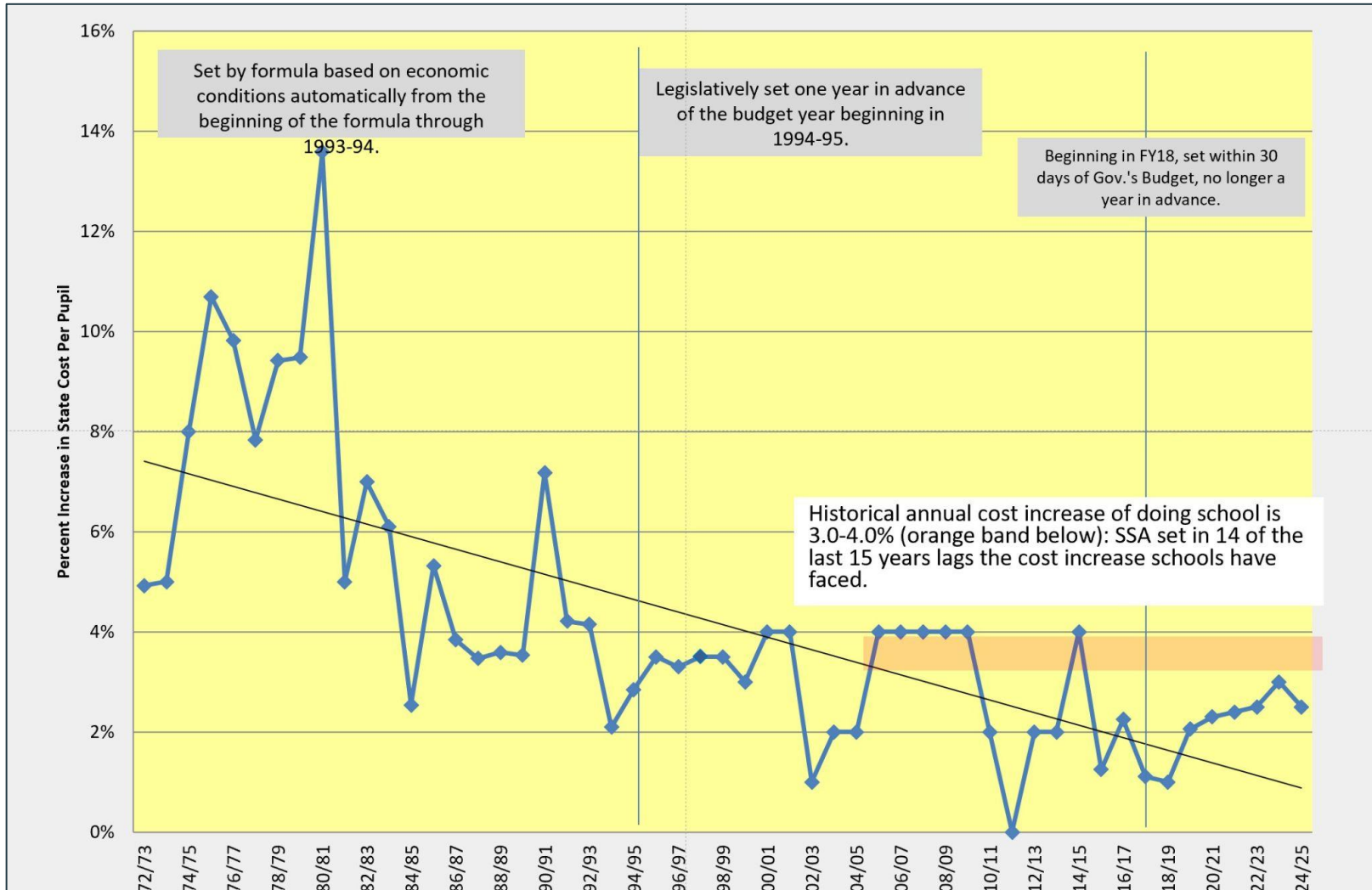
	Ankeny	Cedar Rapids	Davenport	Des Moines	Johnston	Iowa City	Southeast Polk	Urbandale	West Des Moines	Waukee
Total General Fund Spend Per Student State Minimum: \$9,739.44 State Average: \$15,308.00	\$12,945.59	\$15,008.96	\$16,670.33	\$16,033.75	\$12,961.28	\$13,410.82	\$13,644.90	\$13,215.24	\$14,586.31	\$12,366.77
Rank (Out of 327)	230	101	62	74	229	200	181	207	115	271
General Fund Salaries/Benefits Spend Per Student State Minimum: \$1,108.80 State Average: \$10,712.40	\$9,913.99	\$11,672.56	\$11,827.50	\$13,196.20	\$10,046.62	\$11,465.44	\$10,625.23	\$10,283.25	\$11,331.75	\$9,574.35
Rank (Out of 327)	27	62	54	20	213	74	142	187	86	265

General Fund = Total cost divided by number of students served districtwide



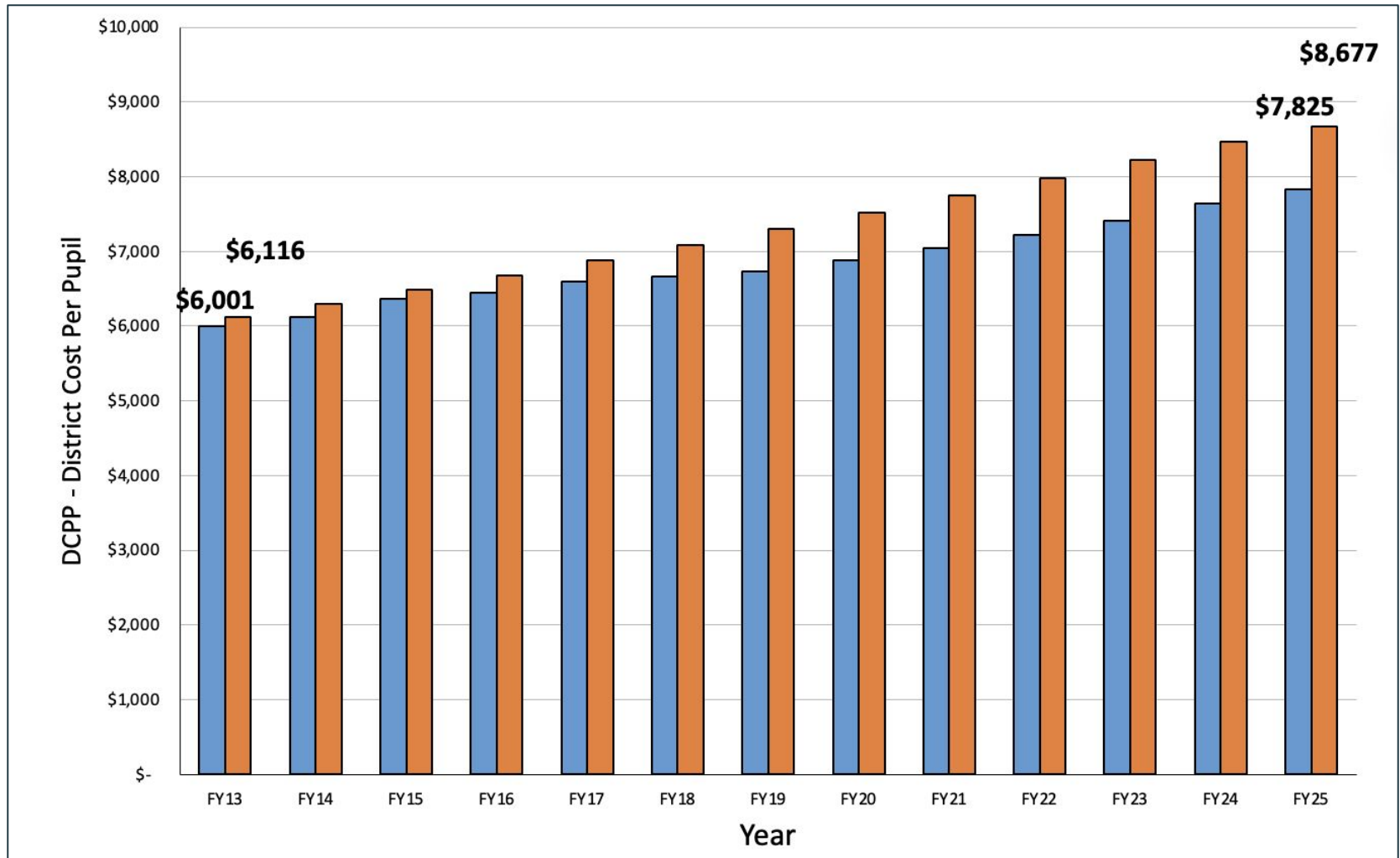
SSA History - Cost Per Pupil Funding

The Iowa funding formula always lags by one year, which means we educate 300-500+ students each year without funds from the state (approx \$2.5).





“What if” Additional 1% SSA - 13 years



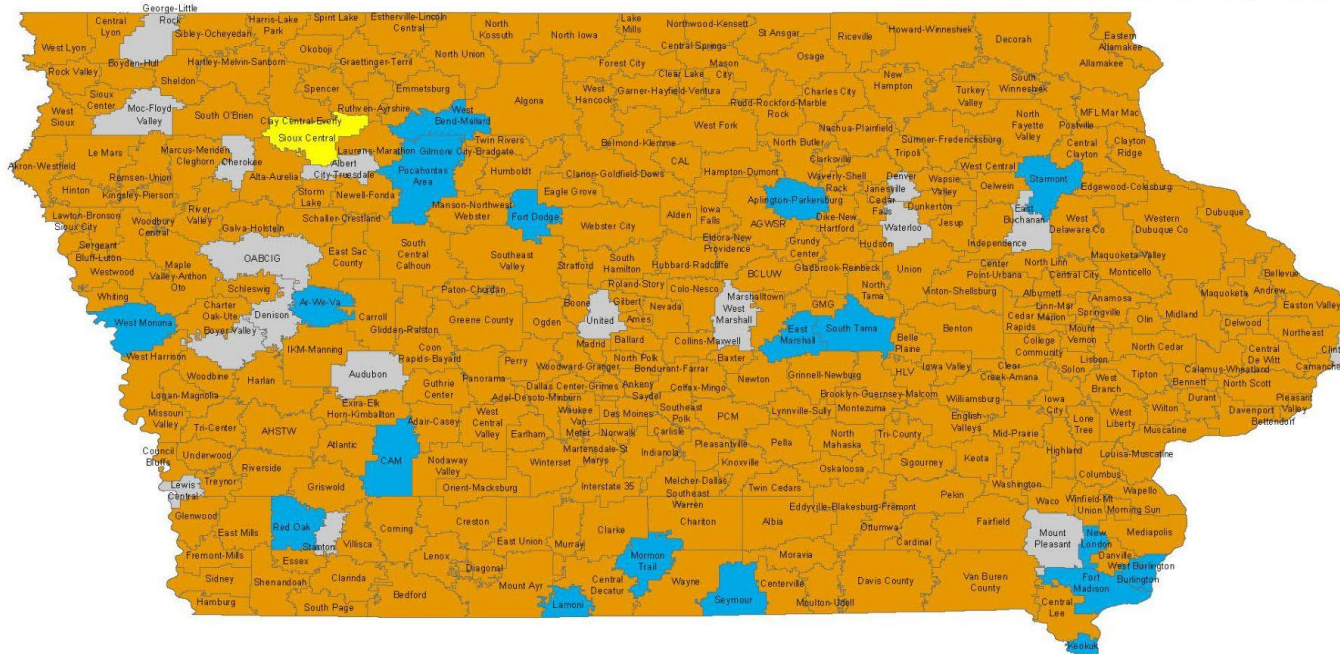
Special Education Funding



Iowa Association of School Boards Special Education Fund Balances - FY 2023

[Click Here for District Specific Data](#)

MSA Amount = \$170.5 Million
Total Positive Balance Amount = \$7.6 Million
Total Amount Redistributed = \$3.8 Million



Legend

District Special Education Fund Balance Status - FY 2023

- Districts with a Negative Balance - Requesting MSA (288 Districts)
- Districts with a Positive Balance (17 Districts)
- Districts with a Positive Balance and a Redistribution Amount (19 Districts)
- Districts with a Negative Balance, but did not Request MSA (1 District)

Notes: Districts with a negative special education fund balance may request a modified supplemental amount (MSA) to recoup special education costs that exceed special education revenue. Districts with a positive balance over 10.0% generated weighted dollars are required to have the funds in excess of 10.0% redistributed by the state to districts with a negative balance.

Sources:

Iowa Department of Education, Spec. Education Fund Balance file
IASB analysis and calculations

Dropout prevention funding

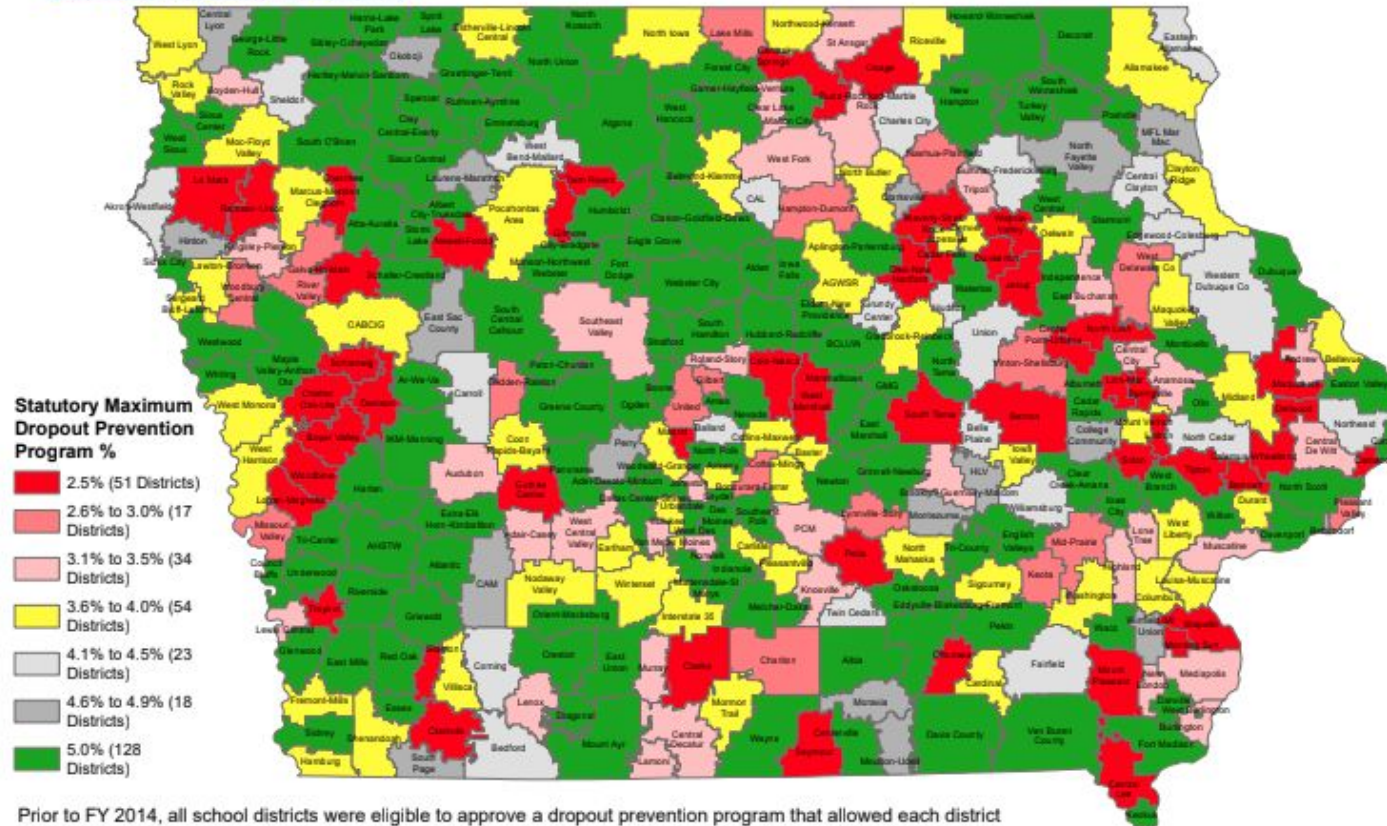


Iowa Association of School Boards

FY 2025 Maximum Allowed Dropout Prevention Program Funding Percentage

Note that this statutory requirement has created a per pupil funding inequity across the state. The per pupil difference range in FY 2024 is about \$190.

[Click Here for District Specific Information](#)



Prior to FY 2014, all school districts were eligible to approve a dropout prevention program that allowed each district the ability to levy up to 5.0% of the district's regular program amount to support programs for returning dropouts and dropout prevention programs. However, enactment of SF 451 during the 2012 legislative session set new maximum rates, based on the district's maximum percentage used between FY 2010 and FY 2013. If a district had not implemented the program during those years or the district's maximum percentage was less than 2.5%, the maximum rate for those districts was set at 2.5%.

Sources:
Iowa Department of Management, School Aid file
IASB analysis and calculations



Waukeee CSD Challenges FY25

- Insurance costs (property, liability, wind/hail, work comp)
- Inflation pressures - SSA vs. CPI
 - FY23 - 2.5% SSA with 6-10% CPI
 - FY24 - 3% SSA with 2.5-6% CPI
 - FY25 - 2.5% SSA with 2.5-2.8% CPI
- Student growth - 300-500+ per year
- Meeting the individual educational needs of students
 - Special education, at-risk, ELL -funding and deficit
 - Mid-year student move-in (5+ teachers hired mid year)
- Technology expenditures (new, replacement, software)
- Staffing, operating, supplying a new building each year
 - FY22 - **NWHS**
 - FY23 - **Sugar Creek**
 - FY24 - **Trailridge & Natatorium**
 - FY25 - **Waterford Elementary**
 - FY26 - North Middle School
 - FY2?- Elementary #12 (timing subject to enrollment needs)
- Macro economic factors, state legislative changes (AEA, prop tax)
- 1/1/24 valuations (for FY25/26 budget)



Legislative Priority: Supplemental State Aid

We support state policies on supplemental state aid rate that:

- Sufficiently supports the ability of local districts to meet parent and community expectations and provide a world-class education for all students.
- Provides the resources to recruit and retain a high-quality teacher and staff workforce.
- Incorporates inflation and cost-of-living increases to minimize the negative impact on a district's general fund from these increased costs.



Legislative Priority: Local Accountability and Decision-Making

- Student Achievement: School boards should have the ability to set priorities, customize programming, and maximize community strengths to improve outcomes for all students
- Accountability & Reporting: Data collection for state accountability should enhance the ability of school boards to focus on student learning and school improvement
- Funding flexibility: School boards should have the ability to maximize existing resources to meet local needs
- Transparency: School boards should have flexibility to provide public access to records in ways that promote transparency for citizens while balancing the cost to taxpayers
- Flexibility on Health and Safety Measures: School boards should have the ability to make decisions, in partnership with local officials, regarding the health and safety needs of students, staff, families and the community



Legislative Priority: Teacher Professional Development and Retention

Developing effective teachers and keeping them in every Iowa school district is crucial to student success and can be supported through state policies that:

- Provide teacher leadership and quality professional development programs
- Provide beginning teacher mentoring programs
- Maintain Iowa's teacher leadership and compensation program
- Create a program to fund retention incentives to maintain a high-quality teacher workforce
- Allow flexibility and resources to pay school staff market competitive wages



Legislative Priority: Student Achievement

- Provide technical assistance for school districts to fully implement the Iowa Content Standards
- Ensure research-based professional development that provides educators with training, support, and time to work together
- Support intensive, high-quality tutoring to improve student literacy and math proficiency
- Continue to identify evidenced-based literacy materials to help improve student achievement
- Expand programming for career/technical education and apprenticeships
- Ensure assessments are aligned to high expectations, improve and align instruction, and quality professional development
- Support curriculum decisions that are made by locally elected school boards
- Allow a consideration process that engages stakeholders, the Department of Education, and the state board of education in graduation requirements
- Provide full access to technology and online learning through infrastructure investments



Legislative Priority: Mental Health

- Increase access to mental health professionals via in-school, in-person, or telehealth visits
- Expand the capacity for therapeutic classrooms to provide short-term solutions to behavioral issues
- Improve awareness and understanding of child mental health needs through ongoing teacher, administrator, and support staff training
- Integrate suicide prevention and coping skills into existing curriculum
- Support the mental health needs of educators and staff
- Provide a comprehensive mental health resources clearinghouse for schools and community providers
- Expand training that includes a referral plan for continuing action provided by mental health professionals outside of the school district
- Designate a categorical funding stream for mental health professionals serving students and staff mental health training
- Support development of a mental health workforce to provide services to children



Legislative Priority: School Safety

Every student and staff member should have a safe and secure environment in which to learn and work. We support state policies to:

- Expand resources and evidence-based training for staff and adults working with students to address behavioral issues.
- Provide early identification, intervention, and school violence prevention programs.
- Enhance flexibility for schools to work with parents, the community, law enforcement and emergency personnel to institute safety measures in and around schools.
- Provide evidence-based school safety training for students and staff.
- Allow maximum flexibility and equitable distribution of resources to meet student, staff and building safety needs.



Legislative Priority: Private School Choice

Accredited private schools who accept education savings account funds should be required to accept all students regardless of race, religion, gender, gender identity, sexual orientation, socio-economic status, and disability.

Accredited private schools who accept education savings account funds should be held to the same standard as public schools with respect to accountability and transparency. This includes the following:

- Make public the annual audit of the accredited private school
- Adhere to the same reporting requirements on student achievement as is required of public schools
- Reimburse the prorated amount of educational savings account funds for a student who is expelled or voluntarily withdraws before the conclusion of the semester



Advocacy - How can you help?

Contact your legislators and **share your story**

Email, mail, phone call

Find your legislator:

www.legis.iowa.gov/legislators

Waukee CSD Legislative Priorities:

waukeeschools.org/board/legislative-priorities



Local Legislators

Chance to hear from our local legislators

- **Senator Sarah Trone Garriott:** Senate District 14
 - sarah.trone.garriott@legis.iowa.gov
- **Senator Claire Celsi:** Senate District 16
 - claire.celsi@legis.iowa.gov
- **Representative Mary Madison:** House District 31
 - mary.madison@legis.iowa.gov
- **Representative Kenan Judge:** House District 27
 - kenan.judge@legis.iowa.gov



Contact Information

President Michael Schrodtt - mschrodtt@waukeeschools.org

Dr. Brad Buck - bbuck@waukeeschools.org

Sarah Enfield - senfield@waukeeschools.org

QUESTIONS?

